

A1695

Leader in Biomolecular Solutions for Life Science



HB-EGF Rabbit pAb

Catalog No.: A1695

4 Publications

Basic Information

Observed MW

23kDa

Calculated MW

23kDa

Category

Polyclonal Antibody

Applications

WB,IF/ICC,ELISA

Cross-Reactivity

Human,Mouse,Rat

Background

Enables growth factor activity and heparin binding activity. Involved in several processes, including epidermal growth factor receptor signaling pathway; positive regulation of protein kinase B signaling; and positive regulation of wound healing. Located in cell surface and extracellular space. Implicated in glomerulosclerosis and perinatal necrotizing enterocolitis.

Recommended Dilutions

WB	1:500 - 1:1000
IF/ICC	1:50 - 1:200

Immunogen Information

Gene ID

1839

Swiss Prot

Q99075

Immunogen

Recombinant fusion protein containing a sequence corresponding to amino acids 20-160 of human HB-EGF (NP_001936.1).

Synonyms

DTR; DTS; DTSF; HEGFL; HB-EGF

Contact



www.abclonal.com

Product Information

Source

Rabbit

Isotype

IgG

Purification

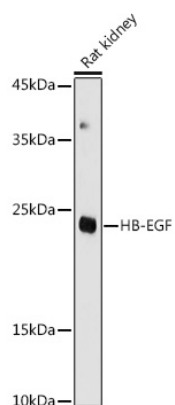
Affinity purification

Storage

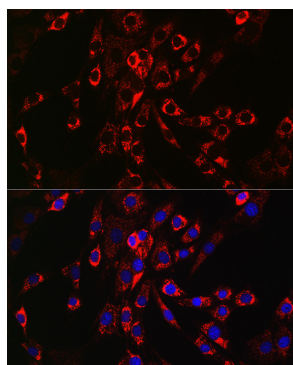
Store at -20°C. Avoid freeze / thaw cycles.

Buffer: PBS with 0.05% proclin300,50% glycerol,pH7.3.

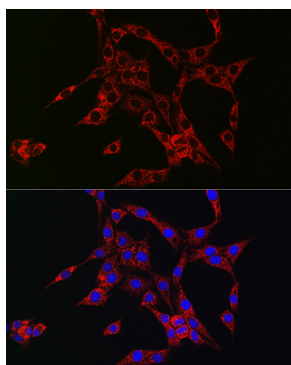
Validation Data



Western blot analysis of extracts of Rat kidney, using HB-EGF antibody (A1695) at 1:1000 dilution.
Secondary antibody: HRP Goat Anti-Rabbit IgG (H+L) (A5014) at 1:10000 dilution.
Lysates/proteins: 25µg per lane.
Blocking buffer: 3% nonfat dry milk in TBST.
Detection: ECL Basic Kit (RM00020).
Exposure time: 180s.



Immunofluorescence analysis of NIH/3T3 cells using HB-EGF Rabbit pAb (A1695) at dilution of 1:100 (40x lens). Blue: DAPI for nuclear staining.



Immunofluorescence analysis of PC-12 cells using HB-EGF Rabbit pAb (A1695) at dilution of 1:100 (40x lens). Blue: DAPI for nuclear staining.