

A16934

Leader in Biomolecular Solutions for Life Science



NPY2R Rabbit pAb

Catalog No.: A16934

Basic Information

Observed MW

42kDa

Calculated MW

43kDa

Category

Polyclonal Antibody

Applications

WB, ELISA

Cross-Reactivity

Human

Background

Predicted to enable calcium channel regulator activity and neuropeptide Y receptor activity. Involved in cardiac left ventricle morphogenesis and outflow tract morphogenesis. Located in cilium. Implicated in Huntington's disease; morbid obesity; and obesity. Biomarker of peripheral artery disease and temporal lobe epilepsy.

Recommended Dilutions

WB 1:500 - 1:2000

Immunogen Information

Gene ID

4887

Swiss Prot

P49146

Immunogen

A synthetic peptide corresponding to a sequence within amino acids 300 to the C-terminus of human NPY2R (NP_000901.1).

Synonyms

NPY2-R; NPY2R

Contact



www.abclonal.com

Product Information

Source

Rabbit

Isotype

IgG

Purification

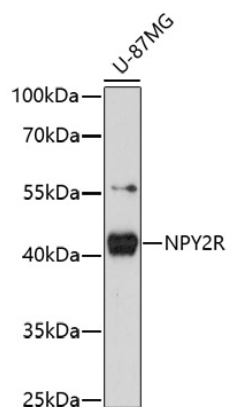
Affinity purification

Storage

Store at -20°C. Avoid freeze / thaw cycles.

Buffer: PBS with 0.01% thimerosal, 50% glycerol, pH 7.3.

Validation Data



Western blot analysis of lysates from U-87MG cells, using NPY2R Rabbit pAb (A16934) at 1:1000 dilution.
Secondary antibody: HRP Goat Anti-Rabbit IgG (H+L) (A5014) at 1:10000 dilution.
Lysates/proteins: 25µg per lane.
Blocking buffer: 3% nonfat dry milk in TBST.
Detection: ECL Basic Kit (RM00020).
Exposure time: 180s.