

A16869

Leader in Biomolecular Solutions for Life Science



Gelsolin Rabbit pAb

Catalog No.: A16869

Basic Information

Observed MW

86kDa

Calculated MW

86kDa

Category

Polyclonal Antibody

Applications

WB, IHC-P, IF/ICC, ELISA

Cross-Reactivity

Human, Mouse, Rat

Background

The protein encoded by this gene binds to the "plus" ends of actin monomers and filaments to prevent monomer exchange. The encoded calcium-regulated protein functions in both assembly and disassembly of actin filaments. Defects in this gene are a cause of familial amyloidosis Finnish type (FAF). Multiple transcript variants encoding several different isoforms have been found for this gene.

Recommended Dilutions

WB	1:500 - 1:1000
IHC-P	1:50 - 1:200
IF/ICC	1:50 - 1:200

Immunogen Information

Gene ID

2934

Swiss Prot

P06396

Immunogen

Recombinant fusion protein containing a sequence corresponding to amino acids 282-438 of human Gelsolin (NP_000168.1).

Synonyms

ADF; AGEL; Gelsolin

Contact



www.abclonal.com

Product Information

Source

Rabbit

Isotype

IgG

Purification

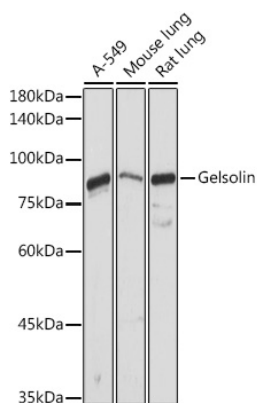
Affinity purification

Storage

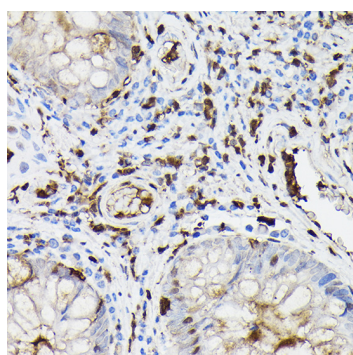
Store at -20°C. Avoid freeze / thaw cycles.

Buffer: PBS with 0.01% thimerosal, 50% glycerol, pH7.3.

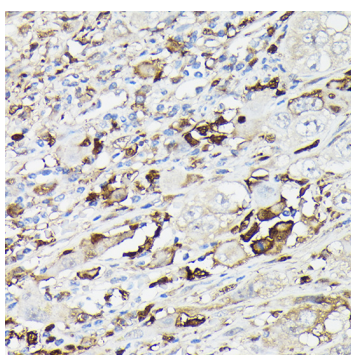
Validation Data



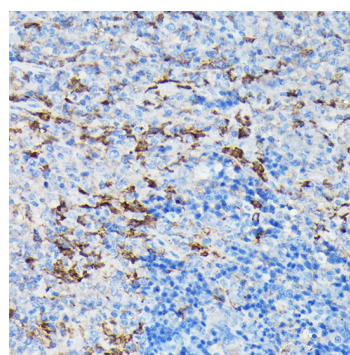
Western blot analysis of extracts of various cell lines, using Gelsolin antibody (A16869) at 1:1000 dilution.
 Secondary antibody: HRP Goat Anti-Rabbit IgG (H+L) (A5014) at 1:10000 dilution.
 Lysates/proteins: 25µg per lane.
 Blocking buffer: 3% nonfat dry milk in TBST.
 Detection: ECL Basic Kit (RM00020).
 Exposure time: 30s.



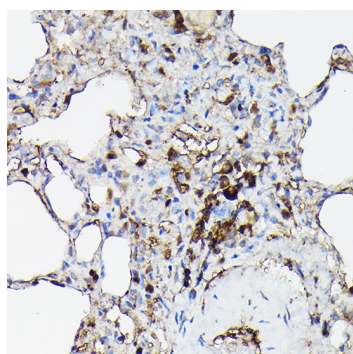
Immunohistochemistry analysis of paraffin-embedded human colon carcinoma using Gelsolin Rabbit pAb (A16869) at dilution of 1:50 (40x lens). Perform high pressure antigen retrieval with 10 mM citrate buffer pH 6.0 before commencing with IHC staining protocol.



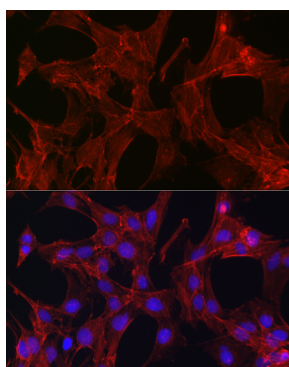
Immunohistochemistry analysis of paraffin-embedded human liver cancer using Gelsolin Rabbit pAb (A16869) at dilution of 1:50 (40x lens). Perform high pressure antigen retrieval with 10 mM citrate buffer pH 6.0 before commencing with IHC staining protocol.



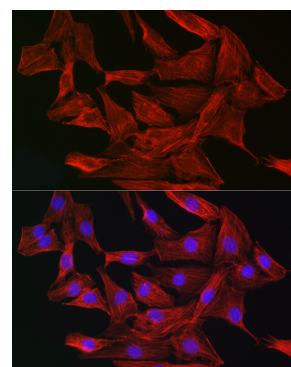
Immunohistochemistry analysis of paraffin-embedded mouse spleen using Gelsolin Rabbit pAb (A16869) at dilution of 1:50 (40x lens). Perform high pressure antigen retrieval with 10 mM citrate buffer pH 6.0 before commencing with IHC staining protocol.



Immunohistochemistry analysis of paraffin-embedded rat lung using Gelsolin Rabbit pAb (A16869) at dilution of 1:50 (40x lens). Perform high pressure antigen retrieval with 10 mM citrate buffer pH 6.0 before commencing with IHC staining protocol.

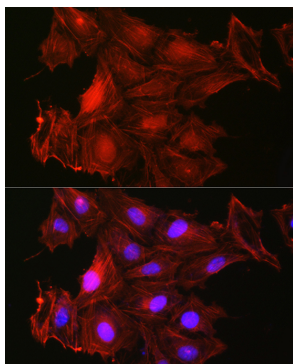


Immunofluorescence analysis of C6 cells using Gelsolin Rabbit pAb (A16869) at dilution of 1:50 (40x lens). Blue: DAPI for nuclear staining.



Immunofluorescence analysis of NIH-3T3 cells using Gelsolin Rabbit pAb (A16869) at dilution of 1:50 (40x lens). Blue: DAPI for nuclear staining.

Validation Data



Immunofluorescence analysis of U-2 OS cells using Gelsolin Rabbit pAb (A16869) at dilution of 1:50 (40x lens). Blue: DAPI for nuclear staining.