

A16860

Leader in Biomolecular Solutions for Life Science



Glucosylceramidase beta (GBA) Rabbit pAb

Catalog No.: A16860

Basic Information

Observed MW

60kDa

Calculated MW

60kDa

Category

Polyclonal Antibody

Applications

WB, ELISA

Cross-Reactivity

Human, Rat

Background

This gene encodes a lysosomal membrane protein that cleaves the beta-glucosidic linkage of glycosylceramide, an intermediate in glycolipid metabolism. Mutations in this gene cause Gaucher disease, a lysosomal storage disease characterized by an accumulation of glucocerebrosides. A related pseudogene is approximately 12 kb downstream of this gene on chromosome 1. Alternative splicing results in multiple transcript variants.

Recommended Dilutions

WB 1:500 - 1:2000

Immunogen Information

Gene ID

2629

Swiss Prot

P04062

Immunogen

Recombinant fusion protein containing a sequence corresponding to amino acids 40-250 of human Glucosylceramidase beta (Glucosylceramidase beta (GBA)) (NP_000148.2).

Synonyms

GBA; GCB; GLUC; Glucosylceramidase beta (GBA)

Contact



www.abclonal.com

Product Information

Source

Rabbit

Isotype

IgG

Purification

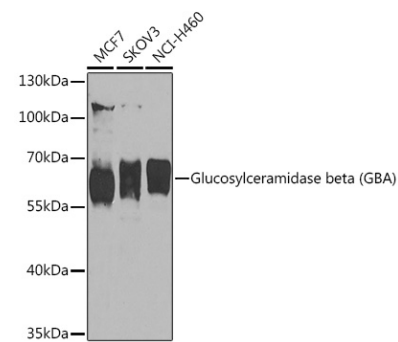
Affinity purification

Storage

Store at -20°C. Avoid freeze / thaw cycles.

Buffer: PBS with 0.02% sodium azide, 50% glycerol, pH 7.3.

Validation Data



Western blot analysis of extracts of various cell lines, using Glucosylceramidase beta (Glucosylceramidase beta (GBA)) Rabbit pAb (A16860) at 1:1000 dilution.
Secondary antibody: HRP Goat Anti-Rabbit IgG (H+L) (AS014) at 1:10000 dilution.
Lysates/proteins: 25µg per lane.
Blocking buffer: 3% nonfat dry milk in TBST.
Detection: ECL Basic Kit (RM00020).
Exposure time: 10s.