

A16846

Leader in Biomolecular Solutions for Life Science



## EZH2/KMT6 Rabbit pAb

Catalog No.: A16846

5 Publications

### Basic Information

#### Observed MW

110kDa

#### Calculated MW

85kDa

#### Category

Polyclonal Antibody

#### Applications

WB,IP,ELISA

#### Cross-Reactivity

Human,Mouse

### Background

This gene encodes a member of the Polycomb-group (PcG) family. PcG family members form multimeric protein complexes, which are involved in maintaining the transcriptional repressive state of genes over successive cell generations. This protein associates with the embryonic ectoderm development protein, the VAV1 oncoprotein, and the X-linked nuclear protein. This protein may play a role in the hematopoietic and central nervous systems. Multiple alternatively spliced transcript variants encoding distinct isoforms have been identified for this gene.

### Recommended Dilutions

WB 1:500 - 1:2000

IP 0.5µg-4µg antibody for  
200µg-400µg extracts of  
whole cells

### Immunogen Information

#### Gene ID

2146

#### Swiss Prot

Q15910

#### Immunogen

Recombinant fusion protein containing a sequence corresponding to amino acids 158-261 of EZH2/KMT6 (NP\_001190176.1).

#### Synonyms

WVS; ENX1; KMT6; WVS2; ENX-1; EZH2b; KMT6A; EZH2/KMT6

### Contact



[www.abclonal.com](http://www.abclonal.com)

### Product Information

#### Source

Rabbit

#### Isotype

IgG

#### Purification

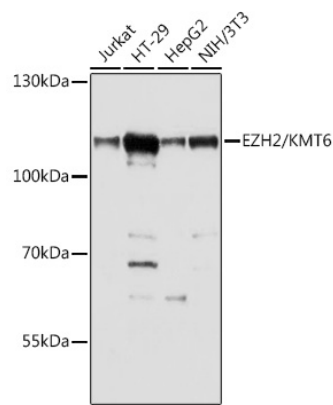
Affinity purification

#### Storage

Store at -20°C. Avoid freeze / thaw cycles.

Buffer: PBS with 0.01% thimerosal, 50% glycerol, pH7.3.

Validation Data



Immunoprecipitation analysis of 200 µg extracts of Jurkat cells using 3 µg EZH2/KMT6 antibody ( A16846). Western blot was performed from the immunoprecipitate using EZH2/KMT6 antibody ( A16846) at a dilution of 1:1000.

