

A16833

Leader in Biomolecular Solutions for Life Science



DNMT1 Rabbit pAb

Catalog No.: A16833

1 Publications

Basic Information

Observed MW

230kDa

Calculated MW

183kDa

Category

Polyclonal Antibody

Applications

WB, IHC-P, IF/ICC, ELISA

Cross-Reactivity

Human, Mouse, Rat

Background

This gene encodes an enzyme that transfers methyl groups to cytosine nucleotides of genomic DNA. This protein is the major enzyme responsible for maintaining methylation patterns following DNA replication and shows a preference for hemi-methylated DNA. Methylation of DNA is an important component of mammalian epigenetic gene regulation. Aberrant methylation patterns are found in human tumors and associated with developmental abnormalities. Variation in this gene has been associated with cerebellar ataxia, deafness, and narcolepsy, and neuropathy, hereditary sensory, type IE. Alternative splicing results in multiple transcript variants.

Recommended Dilutions

WB	1:500 - 1:2000
IHC-P	1:50 - 1:200
IF/ICC	1:50 - 1:200

Immunogen Information

Gene ID

1786

Swiss Prot

P26358

Immunogen

Recombinant fusion protein containing a sequence corresponding to amino acids 1-124 of DNMT1 (NP_001370.1).

Synonyms

AIM; DNMT; MCMT; CXXC9; HSN1E; ADCADN; m.Hsal; DNMT1

Contact



www.abclonal.com

Product Information

Source

Rabbit

Isotype

IgG

Purification

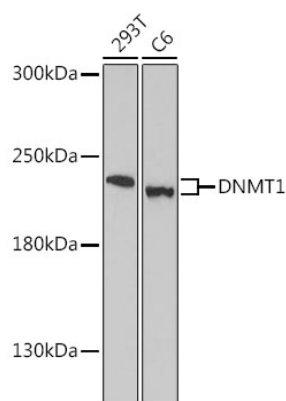
Affinity purification

Storage

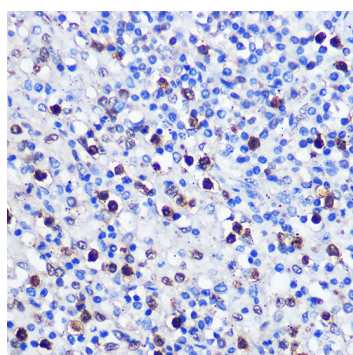
Store at -20°C. Avoid freeze / thaw cycles.

Buffer: PBS with 0.01% thimerosal, 50% glycerol, pH7.3.

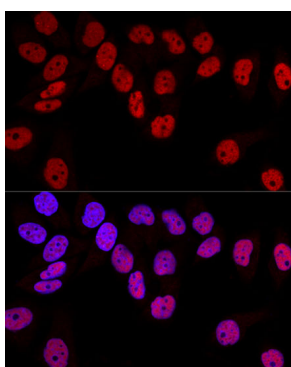
Validation Data



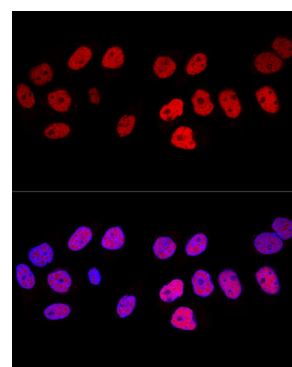
Western blot analysis of various lysates using DNMT1 Rabbit pAb (A16833) at 1:1000 dilution.
 Secondary antibody: HRP Goat Anti-Rabbit IgG (H+L) (AS014) at 1:10000 dilution.
 Lysates/proteins: 25µg per lane.
 Blocking buffer: 3% nonfat dry milk in TBST.
 Detection: ECL Basic Kit (RM00020).
 Exposure time: 180s.



Immunohistochemistry analysis of DNMT1 in paraffin-embedded human spleen using DNMT1 Rabbit pAb (A16833) at dilution of 1:100 (40x lens). Perform microwave antigen retrieval with 10 mM PBS buffer pH 7.2 before commencing with IHC staining protocol.



Confocal immunofluorescence analysis of HeLa cells using DNMT1 Rabbit pAb (A16833) at dilution of 1:100. Blue: DAPI for nuclear staining.



Confocal immunofluorescence analysis of HeLa cells using DNMT1 Rabbit pAb (A16833) at dilution of 1:100. Blue: DAPI for nuclear staining.