

A16826

Leader in Biomolecular Solutions for Life Science



## CTBP2 Rabbit pAb

Catalog No.: A16826

### Basic Information

**Observed MW**

49kDa

**Calculated MW**

49kDa

**Category**

Polyclonal Antibody

**Applications**

WB,IF/ICC,ELISA

**Cross-Reactivity**

Human,Mouse,Rat

### Background

This gene produces alternative transcripts encoding two distinct proteins. One protein is a transcriptional repressor, while the other isoform is a major component of specialized synapses known as synaptic ribbons. Both proteins contain a NAD<sup>+</sup> binding domain similar to NAD<sup>+</sup>-dependent 2-hydroxyacid dehydrogenases. A portion of the 3' untranslated region was used to map this gene to chromosome 21q21.3; however, it was noted that similar loci elsewhere in the genome are likely. Blast analysis shows that this gene is present on chromosome 10. Several transcript variants encoding two different isoforms have been found for this gene.

### Recommended Dilutions

<b>WB</b>	1:500 - 1:2000
<b>IF/ICC</b>	1:50 - 1:200

### Immunogen Information

**Gene ID**

1488

**Swiss Prot**

P56545

**Immunogen**

A synthetic peptide corresponding to a sequence within amino acids 300 to the C-terminus of human CTBP2 (NP\_001320.1).

**Synonyms**

CTBP2

### Contact



[www.abclonal.com](http://www.abclonal.com)

### Product Information

**Source**

Rabbit

**Isotype**

IgG

**Purification**

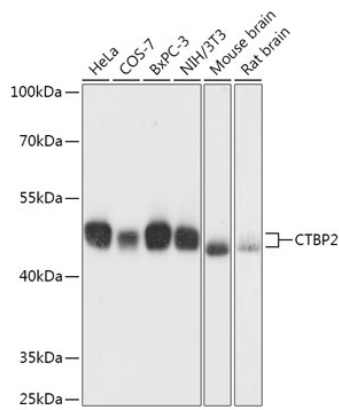
Affinity purification

**Storage**

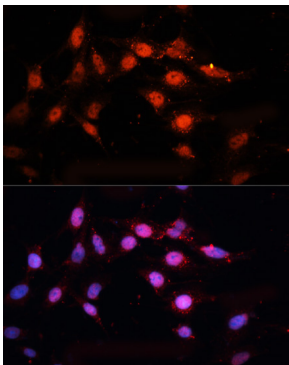
Store at -20°C. Avoid freeze / thaw cycles.

Buffer: PBS with 0.01% thimerosal, 50% glycerol, pH7.3.

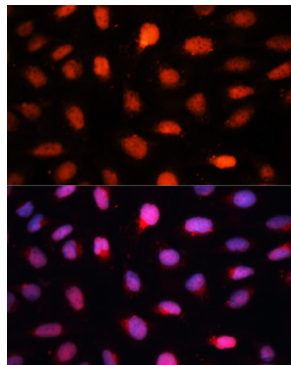
## Validation Data



Western blot analysis of various lysates using CTBP2 Rabbit pAb (A16826) at 1:1000 dilution.  
Secondary antibody: HRP Goat Anti-Rabbit IgG (H+L) (AS014) at 1:10000 dilution.  
Lysates/proteins: 25µg per lane.  
Blocking buffer: 3% nonfat dry milk in TBST.  
Detection: ECL Basic Kit (RM00020).  
Exposure time: 10s.



Immunofluorescence analysis of C6 cells using CTBP2 Rabbit pAb (A16826) at dilution of 1:100. Secondary antibody: Cy3 Goat Anti-Rabbit IgG (H+L) (AS007) at 1:500 dilution. Blue: DAPI for nuclear staining.



Immunofluorescence analysis of U2OS cells using CTBP2 Rabbit pAb (A16826) at dilution of 1:100. Secondary antibody: Cy3 Goat Anti-Rabbit IgG (H+L) (AS007) at 1:500 dilution. Blue: DAPI for nuclear staining.