

## [KO Validated] POLB Polyclonal Antibody

<b>Catalog No.</b>	A1681	<b>Category</b>	Polyclonal Antibodies
<b>Applications</b>	WB, IF	<b>Observed MW</b>	37kDa
<b>Cross-reactivity</b>	Human, Mouse, Rat	<b>Calculated MW</b>	38kDa

### Immunogen Information

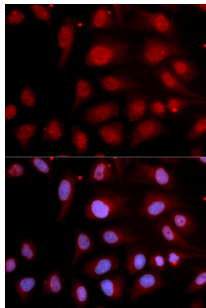
<b>Immunogen</b>	Recombinant fusion protein containing a sequence corresponding to amino acids 1-335 of human POLB (NP_002681.1).
<b>Gene ID</b>	5423
<b>Swiss prot</b>	P06746
<b>Synonyms</b>	POLB; DNA polymerase beta

### Product information

<b>Source</b>	Rabbit
<b>Isotype</b>	IgG
<b>Purification method</b>	Affinity purification
<b>Storage</b>	Store at -20°C. Avoid freeze / thaw cycles. Buffer: PBS with 0.02% sodium azide, 50% glycerol, pH7.3.

### Background

The protein encoded by this gene is a DNA polymerase involved in base excision and repair, also called gap-filling DNA synthesis. The encoded protein, acting as a monomer, is normally found in the cytoplasm, but it translocates to the nucleus upon DNA damage. Several transcript variants of this gene exist, but the full-length nature of only one has been described to date.

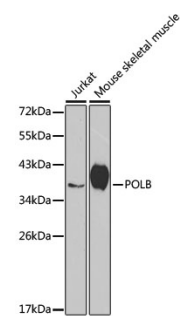


Immunofluorescence - [KO Validated]  
POLB Polyclonal Antibody (A1681)

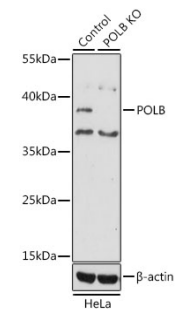
### Recommended Dilutions

WB 1:200 -  
1:1000

IF 1:50 -  
1:200



Western blot - [KO Validated] POLB Polyclonal Antibody (A1681)



Western blot - [KO Validated] POLB Polyclonal Antibody (A1681)