

A16778

Leader in Biomolecular Solutions for Life Science



## BMPR2 Rabbit pAb

Catalog No.: A16778

1 Publications

### Basic Information

#### Observed MW

100kDa

#### Calculated MW

115kDa

#### Category

Mouse Monoclonal Antibody

#### Applications

WB, IHC-P, ELISA

#### Cross-Reactivity

Human, Mouse, Rat

### Background

This gene encodes a member of the bone morphogenetic protein (BMP) receptor family of transmembrane serine/threonine kinases. The ligands of this receptor are members of the TGF-beta superfamily. BMPs are involved in endochondral bone formation and embryogenesis. These proteins transduce their signals through the formation of heteromeric complexes of two different types of serine (threonine) kinase receptors: type I receptors of about 50-55 kD and type II receptors of about 70-80 kD. Mutations in this gene have been associated with primary pulmonary hypertension, both familial and fenfluramine-associated, and with pulmonary venoocclusive disease.

### Recommended Dilutions

|       |                |
|-------|----------------|
| WB    | 1:500 - 1:2000 |
| IHC-P | 1:50 - 1:200   |

### Immunogen Information

#### Gene ID

659

#### Swiss Prot

Q13873

#### Immunogen

Recombinant fusion protein containing a sequence corresponding to amino acids 27-150 of human BMPR2 (NP\_001195.2).

#### Synonyms

BMR2; PPH1; BMPR3; BRK-3; POVD1; T-ALK; BMPR-II; BMPR2

### Contact



[www.abclonal.com](http://www.abclonal.com)

### Product Information

#### Source

Rabbit

#### Isotype

IgG

#### Purification

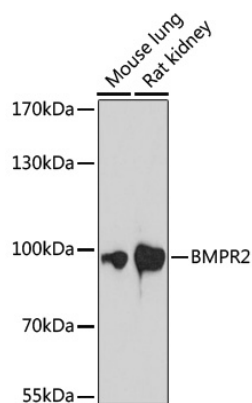
Affinity purification

#### Storage

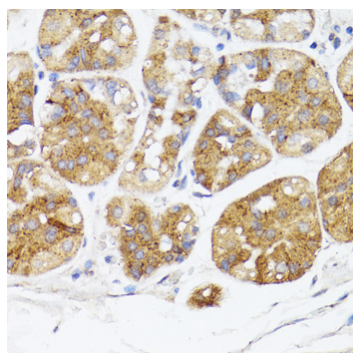
Store at -20°C. Avoid freeze / thaw cycles.

Buffer: PBS with 0.02% sodium azide, 50% glycerol, pH7.3.

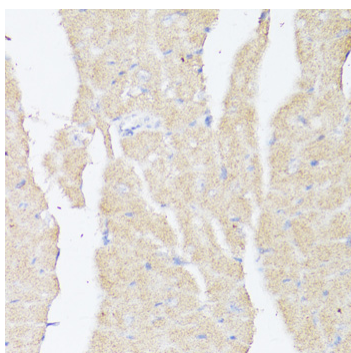
## Validation Data



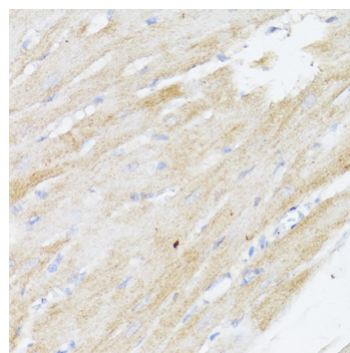
Western blot analysis of various lysates using BMPR2 Rabbit pAb (A16778) at 1:1000 dilution.  
Secondary antibody: HRP Goat Anti-Rabbit IgG (H+L) (AS014) at 1:10000 dilution.  
Lysates/proteins: 25µg per lane.  
Blocking buffer: 3% nonfat dry milk in TBST.  
Detection: ECL Basic Kit (RM00020).  
Exposure time: 90s.



Immunohistochemistry analysis of BMPR2 in paraffin-embedded human stomach using BMPR2 Rabbit pAb (A16778) at dilution of 1:100 (40x lens). Perform microwave antigen retrieval with 10 mM PBS buffer pH 7.2 before commencing with IHC staining protocol.



Immunohistochemistry analysis of BMPR2 in paraffin-embedded mouse heart using BMPR2 Rabbit pAb (A16778) at dilution of 1:100 (40x lens). Perform microwave antigen retrieval with 10 mM PBS buffer pH 7.2 before commencing with IHC staining protocol.



Immunohistochemistry analysis of BMPR2 in paraffin-embedded rat heart using BMPR2 Rabbit pAb (A16778) at dilution of 1:100 (40x lens). Perform microwave antigen retrieval with 10 mM PBS buffer pH 7.2 before commencing with IHC staining protocol.