

A16775

Leader in Biomolecular Solutions for Life Science



## Bcl-2 Rabbit pAb

Catalog No.: A16775

### Basic Information

**Observed MW**

26kDa

**Calculated MW**

26kDa

**Category**

Polyclonal Antibody

**Applications**

WB,IF/ICC,ELISA

**Cross-Reactivity**

Human,Mouse,Rat

### Background

This gene encodes an integral outer mitochondrial membrane protein that blocks the apoptotic death of some cells such as lymphocytes. Constitutive expression of BCL2, such as in the case of translocation of BCL2 to Ig heavy chain locus, is thought to be the cause of follicular lymphoma. Alternative splicing results in multiple transcript variants.

### Recommended Dilutions

<b>WB</b>	1:500 - 1:1000
<b>IF/ICC</b>	1:50 - 1:200

### Immunogen Information

**Gene ID**

596

**Swiss Prot**

P10415

**Immunogen**

A synthetic peptide corresponding to a sequence within amino acids 1-100 of human Bcl-2 (NP\_000624.2).

**Synonyms**

Bcl-2; PPP1R50

### Contact



[www.abclonal.com](http://www.abclonal.com)

### Product Information

**Source**

Rabbit

**Isotype**

IgG

**Purification**

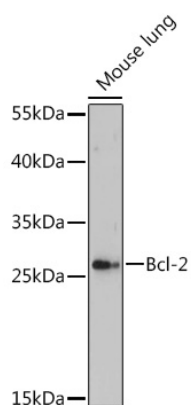
Affinity purification

**Storage**

Store at -20°C. Avoid freeze / thaw cycles.

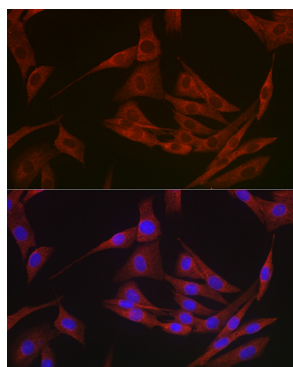
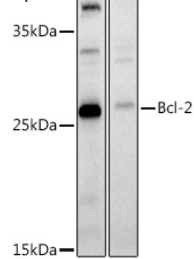
Buffer: PBS with 0.01% thimerosal,50% glycerol,pH7.3.

## Validation Data

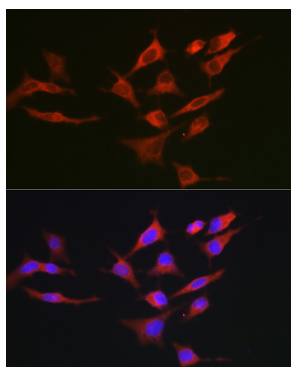


Western blot analysis of lysates from Mouse lung, using Bcl-2 Rabbit pAb (A16775) at 1:500 dilution.  
Secondary antibody: HRP Goat Anti-Rabbit IgG (H+L) (AS014) at 1:10000 dilution.  
Lysates/proteins: 25µg per lane.  
Blocking buffer: 3% nonfat dry milk in TBST.  
Detection: ECL Enhanced Kit (RM00021).  
Exposure time: 5s.

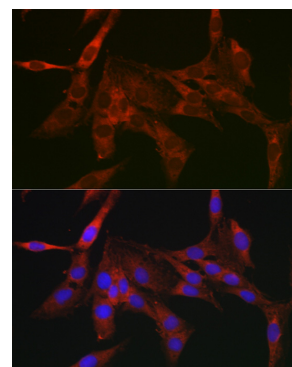
Western blot analysis of various lysates using Bcl-2 Rabbit pAb (A16775) at 1:1000 dilution.  
Secondary antibody: HRP Goat Anti-Rabbit IgG (H+L) (AS014) at 1:10000 dilution.  
Lysates/proteins: 25µg per lane.  
Blocking buffer: 3% nonfat dry milk in TBST.  
Detection: ECL Basic Kit (RM00020).  
Exposure time: 180s.



Immunofluorescence analysis of NIH/3T3 cells using Bcl-2 Rabbit pAb (A16775) at dilution of 1:250. Secondary antibody: Cy3 Goat Anti-Rabbit IgG (H+L) (AS007) at 1:500 dilution. Blue: DAPI for nuclear staining.



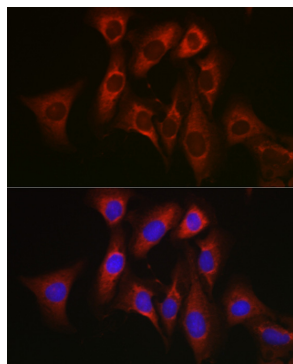
Immunofluorescence analysis of HeLa cells using Bcl-2 Rabbit pAb (A16775) at dilution of 1:250. Secondary antibody: Cy3 Goat Anti-Rabbit IgG (H+L) (AS007) at 1:500 dilution. Blue: DAPI for nuclear staining.



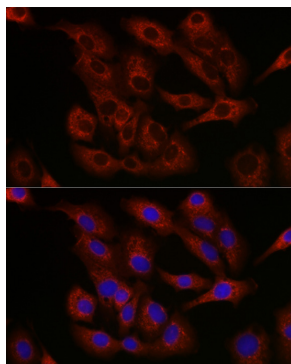
Immunofluorescence analysis of C6 cells using Bcl-2 Rabbit pAb (A16775) at dilution of 1:250. Secondary antibody: Cy3 Goat Anti-Rabbit IgG (H+L) (AS007) at 1:500 dilution. Blue: DAPI for nuclear staining.

## Validation Data

---



Immunofluorescence analysis of U2OS cells using Bcl-2 Rabbit pAb (A16775) at dilution of 1:250. Secondary antibody: Cy3 Goat Anti-Rabbit IgG (H+L) (AS007) at 1:500 dilution. Blue: DAPI for nuclear staining.



Immunofluorescence analysis of A-549 cells using Bcl-2 Rabbit pAb (A16775) at dilution of 1:250. Secondary antibody: Cy3 Goat Anti-Rabbit IgG (H+L) (AS007) at 1:500 dilution. Blue: DAPI for nuclear staining.