

A1677

Leader in Biomolecular Solutions for Life Science



XRCC4 Rabbit pAb

Catalog No.: A1677

9 Publications

Basic Information

Observed MW

55kDa

Calculated MW

38kDa

Category

Mouse Monoclonal Antibody

Applications

WB, IHC-P, IF/ICC, ELISA

Cross-Reactivity

Human, Rat

Background

The protein encoded by this gene functions together with DNA ligase IV and the DNA-dependent protein kinase in the repair of DNA double-strand breaks. This protein plays a role in both non-homologous end joining and the completion of V(D)J recombination. Mutations in this gene can cause short stature, microcephaly, and endocrine dysfunction (SSMED). Alternate transcript variants such as NM_022406 are unlikely to be expressed in some individuals due to a polymorphism (rs1805377) in the last splice acceptor site.

Recommended Dilutions

| | |
|--------|----------------|
| WB | 1:500 - 1:1000 |
| IHC-P | 1:50 - 1:200 |
| IF/ICC | 1:50 - 1:100 |

Immunogen Information

Gene ID

7518

Swiss Prot

Q13426

Immunogen

Recombinant fusion protein containing a sequence corresponding to amino acids 1-336 of human XRCC4 (NP_001304941.1?).

Synonyms

SSMED; hXRCC4; XRCC4

Contact



www.abclonal.com

Product Information

Source

Rabbit

Isotype

IgG

Purification

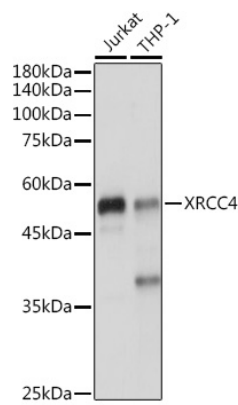
Affinity purification

Storage

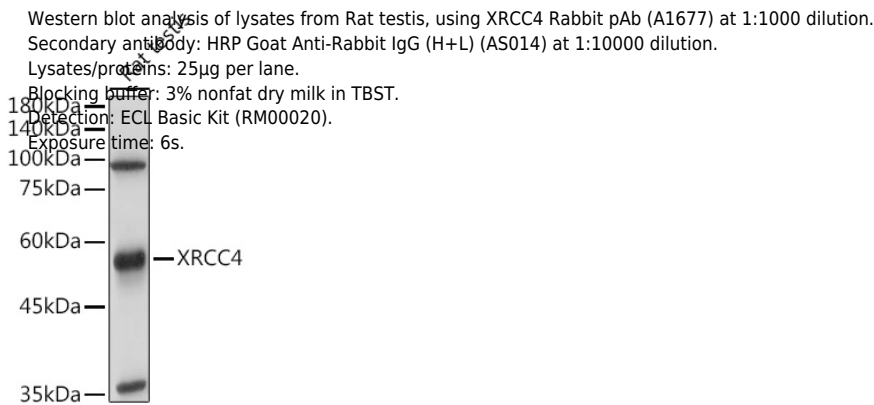
Store at -20°C. Avoid freeze / thaw cycles.

Buffer: PBS with 0.01% thimerosal, 50% glycerol, pH 7.3.

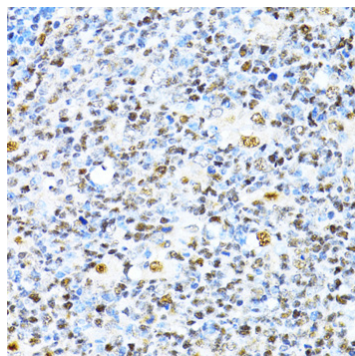
Validation Data



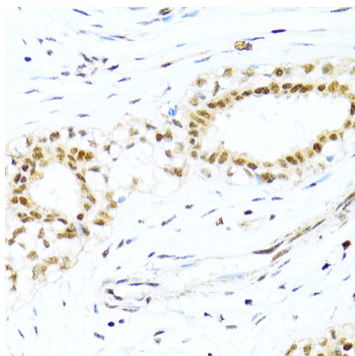
Western blot analysis of various lysates using XRCC4 Rabbit pAb (A1677) at 1:1000 dilution.
Secondary antibody: HRP Goat Anti-Rabbit IgG (H+L) (A5014) at 1:10000 dilution.
Lysates/proteins: 25µg per lane.
Blocking buffer: 3% nonfat dry milk in TBST.
Detection: ECL Enhanced Kit (RM00021).
Exposure time: 1s.



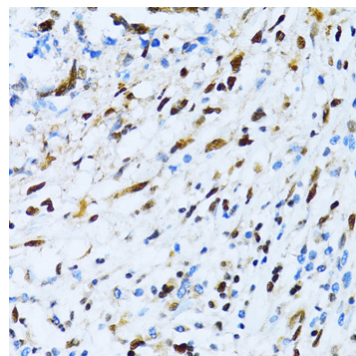
Western blot analysis of lysates from Rat testis, using XRCC4 Rabbit pAb (A1677) at 1:1000 dilution.
Secondary antibody: HRP Goat Anti-Rabbit IgG (H+L) (A5014) at 1:10000 dilution.
Lysates/proteins: 25µg per lane.
Blocking buffer: 3% nonfat dry milk in TBST.
Detection: ECL Basic Kit (RM00020).
Exposure time: 6s.



Immunohistochemistry analysis of XRCC4 in paraffin-embedded human appendix using XRCC4 Rabbit pAb (A1677) at dilution of 1:100 (40x lens).Perform microwave antigen retrieval with 10 mM PBS buffer pH 7.2 before commencing with IHC staining protocol.

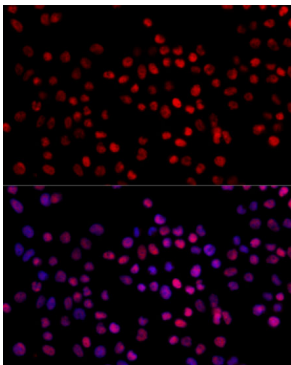


Immunohistochemistry analysis of XRCC4 in paraffin-embedded human breast cancer using XRCC4 Rabbit pAb (A1677) at dilution of 1:100 (40x lens).Perform microwave antigen retrieval with 10 mM PBS buffer pH 7.2 before commencing with IHC staining protocol.



Immunohistochemistry analysis of XRCC4 in paraffin-embedded human gastric cancer using XRCC4 Rabbit pAb (A1677) at dilution of 1:100 (40x lens).Perform microwave antigen retrieval with 10 mM PBS buffer pH 7.2 before commencing with IHC staining protocol.

Validation Data



Immunofluorescence analysis of 293T cells using XRCC4 Rabbit pAb (A1677) at dilution of 1:100. Blue: DAPI for nuclear staining.