

# IL18 Rabbit pAb

Catalog No.: A16737 **27 Publications**

## Basic Information

### Observed MW

22kDa

### Calculated MW

22kDa

### Category

Primary antibody

### Applications

ELISA, WB, IF/ICC

### Cross-Reactivity

Human, Mouse, Rat

## Background

The protein encoded by this gene is a proinflammatory cytokine of the IL-1 family that is constitutively found as a precursor within the cytoplasm of a variety of cells including macrophages and keratinocytes. The inactive IL-18 precursor is processed to its active form by caspase-1, and is capable of stimulating interferon gamma production, and of regulating both T helper (Th) 1 and Th2 responses. This cytokine has been implicated in the injury of different organs, and in potentially fatal conditions characterized by a cytokine storm. In humans, IL-18 gene is located on chromosome 11. Alternatively spliced transcript variants encoding different isoforms have been found for this gene.

## Recommended Dilutions

**WB** 1:1000 - 1:5000**IF/ICC** 1:50 - 1:200

## Immunogen Information

### Gene ID

3606

### Swiss Prot

Q14116

### Immunogen

A synthetic peptide corresponding to a sequence within amino acids 31-130 of human IL18 (NP\_001553.1).

### Synonyms

IGIF; IL-18; IL-1g; IL1F4; IL18

## Contact

 | [www.abclonal.com](http://www.abclonal.com)

## Product Information

### Source

Rabbit

### Isotype

IgG

### Purification

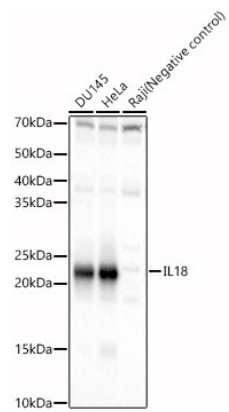
Affinity purification

### Storage

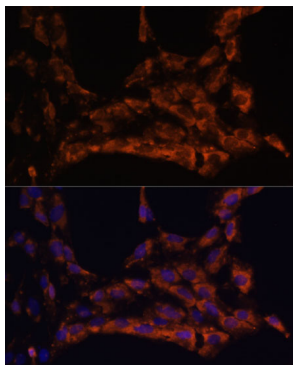
Store at -20°C. Avoid freeze / thaw cycles.

Buffer: PBS with 0.05% proclin300, 50% glycerol, pH7.3.

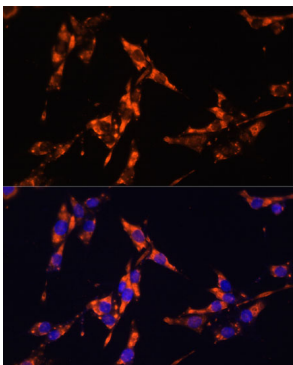
Validation Data



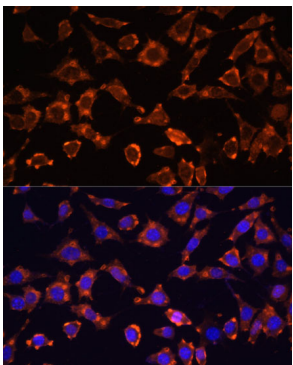
Western blot analysis of various lysates, using IL18 Rabbit pAb (A16737) at 1:2000 dilution.  
Secondary antibody: HRP Goat Anti-Rabbit IgG (H+L) (AS014) at 1:10000 dilution.  
Lysates/proteins: 25µg per lane.  
Blocking buffer: 3% nonfat dry milk in TBST.  
Detection: ECL Basic Kit (RM00020).  
Exposure time: 10s.



Immunofluorescence analysis of C6 cells using IL18 Rabbit pAb (A16737) at dilution of 1:100. Secondary antibody: Cy3 Goat Anti-Rabbit IgG (H+L) (AS007) at 1:500 dilution. Blue: DAPI for nuclear staining.



Immunofluorescence analysis of HeLa cells using IL18 Rabbit pAb (A16737) at dilution of 1:100. Secondary antibody: Cy3 Goat Anti-Rabbit IgG (H+L) (AS007) at 1:500 dilution. Blue: DAPI for nuclear staining.



Immunofluorescence analysis of L929 cells using IL18 Rabbit pAb (A16737) at dilution of 1:100. Secondary antibody: Cy3 Goat Anti-Rabbit IgG (H+L) (AS007) at 1:500 dilution. Blue: DAPI for nuclear staining.