

A16724

Leader in Biomolecular Solutions for Life Science



GPR37 Rabbit pAb

Catalog No.: A16724

Basic Information

Observed MW

67kDa

Calculated MW

67kDa

Category

Polyclonal Antibody

Applications

WB, ELISA

Cross-Reactivity

Human, Rat

Background

This gene is a member of the G protein-coupled receptor family. The encoded protein contains seven transmembrane domains and is found in cell and endoplasmic reticulum membranes. G protein-coupled receptors are involved in translating outside signals into G protein mediated intracellular effects. This gene product interacts with Parkin and is involved in juvenile Parkinson disease.

Recommended Dilutions

WB 1:500 - 1:2000

Immunogen Information

Gene ID

2861

Swiss Prot

O15354

Immunogen

Recombinant fusion protein containing a sequence corresponding to amino acids 40-180 of human GPR37 (NP_005293.1).

Synonyms

PAELR; EDNRBL; hET(B)R-LP; GPR37

Contact



www.abclonal.com

Product Information

Source

Rabbit

Isotype

IgG

Purification

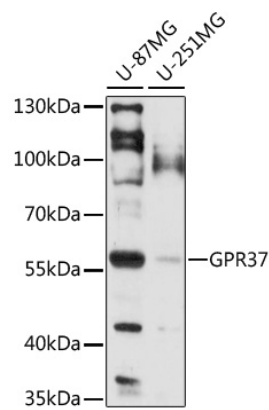
Affinity purification

Storage

Store at -20°C. Avoid freeze / thaw cycles.

Buffer: PBS with 0.01% thimerosal, 50% glycerol, pH 7.3.

Validation Data



Western blot analysis of various lysates using GPR37 Rabbit pAb (A16724) at 1:1000 dilution.
Secondary antibody: HRP Goat Anti-Rabbit IgG (H+L) (A5014) at 1:10000 dilution.
Lysates/proteins: 25µg per lane.
Blocking buffer: 3% nonfat dry milk in TBST.
Detection: ECL Basic Kit (RM00020).
Exposure time: 60s.