

A1670

Leader in Biomolecular Solutions for Life Science



## Kininogen 1 (KNG1) Rabbit pAb

Catalog No.: A1670

### Basic Information

#### Observed MW

72kDa

#### Calculated MW

72kDa

#### Category

Polyclonal Antibody

#### Applications

WB, IF/ICC, ELISA

#### Cross-Reactivity

Human, Mouse, Rat

### Background

This gene uses alternative splicing to generate two different proteins- high molecular weight kininogen (HMWK) and low molecular weight kininogen (LMWK). HMWK is essential for blood coagulation and assembly of the kallikrein-kinin system. Also, bradykinin, a peptide causing numerous physiological effects, is released from HMWK. Bradykinin also functions as an antimicrobial peptide with antibacterial and antifungal activity. In contrast to HMWK, LMWK is not involved in blood coagulation. Infection with severe acute respiratory syndrome coronavirus 2 (SARS-CoV-2) reduces or depletes angiotensin converting enzyme 2 (ACE2), which results in an increase in levels of des-Arg(9)-bradykinin, a bioactive metabolite of bradykinin that is associated with lung injury and inflammation. Three transcript variants encoding different isoforms have been found for this gene.

### Recommended Dilutions

WB	1:100 - 1:500
IF/ICC	1:50 - 1:200

### Immunogen Information

#### Gene ID

3827

#### Swiss Prot

P01042

#### Immunogen

Recombinant fusion protein containing a sequence corresponding to amino acids 148-427 of human Kininogen 1 (KNG1) (NP\_000884.1).

#### Synonyms

BK; HK; BDK; KNG; HAE6; HMWK; Kininogen 1 (KNG1)

### Contact



[www.abclonal.com](http://www.abclonal.com)

### Product Information

#### Source

Rabbit

#### Isotype

IgG

#### Purification

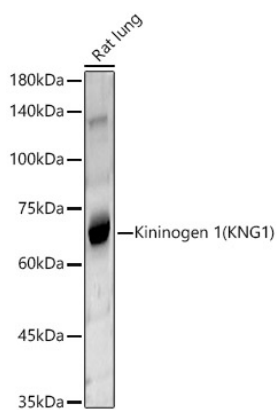
Affinity purification

#### Storage

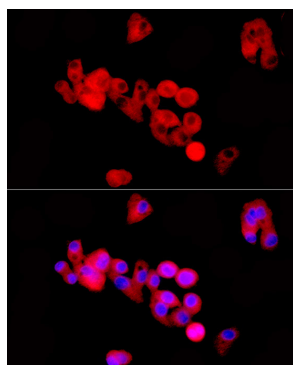
Store at -20°C. Avoid freeze / thaw cycles.

Buffer: PBS with 0.05% proclin300, 50% glycerol, pH7.3.

## Validation Data



Western blot analysis of Rat lung, using Kininogen1(KNG1) antibody (A1670) at 1:400 dilution.  
Secondary antibody: HRP Goat Anti-Rabbit IgG (H+L) (AS014) at 1:10000 dilution.  
Lysates/proteins: 25µg per lane.  
Blocking buffer: 3% nonfat dry milk in TBST.  
Detection: ECL Basic Kit (RM00020).  
Exposure time: 30s.



Immunofluorescence analysis of HepG2 cells using Kininogen 1 (KNG1) Rabbit pAb (A1670) at dilution of 1:50 (40x lens). Blue: DAPI for nuclear staining.