

A16670

Leader in Biomolecular Solutions for Life Science



## CORO2B Rabbit pAb

Catalog No.: A16670

1 Publications

### Basic Information

#### Observed MW

#### Calculated MW

55kDa

#### Category

Mouse Monoclonal Antibody

#### Applications

WB, ELISA

#### Cross-Reactivity

Human, Mouse, Rat

### Background

Enables talin binding activity and vinculin binding activity. Acts upstream of or within several processes, including negative regulation of cell-substrate adhesion; regulation of actin cytoskeleton organization; and regulation of establishment of protein localization. Located in focal adhesion.

### Recommended Dilutions

WB 1:500 - 1:2000

### Immunogen Information

#### Gene ID

10391

#### Swiss Prot

Q9UQ03

#### Immunogen

Recombinant fusion protein containing a sequence corresponding to amino acids 361-480 of human CORO2B (NP\_006082.3).

#### Synonyms

CLIPINC; CORO2B

### Contact



[www.abclonal.com](http://www.abclonal.com)

### Product Information

#### Source

Rabbit

#### Isotype

IgG

#### Purification

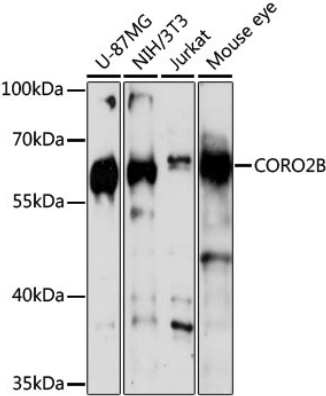
Affinity purification

#### Storage

Store at -20°C. Avoid freeze / thaw cycles.

Buffer: PBS with 0.01% thimerosal, 50% glycerol, pH7.3.

Validation Data



Western blot analysis of various lysates using CORO2B Rabbit pAb (A16670) at 1:3000 dilution.  
Secondary antibody: HRP Goat Anti-Rabbit IgG (H+L) (A5014) at 1:10000 dilution.  
Lysates/proteins: 25µg per lane.  
Blocking buffer: 3% nonfat dry milk in TBST.  
Detection: ECL Basic Kit (RM00020).  
Exposure time: 60s.