

A16665

Leader in Biomolecular Solutions for Life Science



## SCN5A Rabbit pAb

Catalog No.: A16665

### Basic Information

**Observed MW**

230-280kDa

**Calculated MW**

227kDa

**Category**

Polyclonal Antibody

**Applications**

WB, ELISA

**Cross-Reactivity**

Mouse

### Background

The protein encoded by this gene is an integral membrane protein and tetrodotoxin-resistant voltage-gated sodium channel subunit. This protein is found primarily in cardiac muscle and is responsible for the initial upstroke of the action potential in an electrocardiogram. Defects in this gene have been associated with long QT syndrome type 3 (LQT3), atrial fibrillation, cardiomyopathy, and Brugada syndrome 1, all autosomal dominant cardiac diseases. Alternative splicing results in several transcript variants encoding different isoforms.

### Recommended Dilutions

WB 1:500 - 1:1000

### Immunogen Information

**Gene ID**

6331

**Swiss Prot**

Q14524

**Immunogen**

A synthetic peptide corresponding to a sequence within amino acids 1950-2016 of human SCN5A (NP\_932173.1).

**Synonyms**

HB1; HB2; HH1; IVF; VF1; HBBB; ICCD; LQT3; SSS1; CDCD2; CMD1E; CMPD2; PFHB1; Nav1.5; SCN5A

### Contact



[www.abclonal.com](http://www.abclonal.com)

### Product Information

**Source**

Rabbit

**Isotype**

IgG

**Purification**

Affinity purification

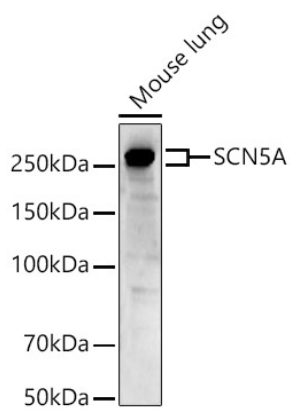
**Storage**

Store at -20°C. Avoid freeze / thaw cycles.

Buffer: PBS with 0.01% thimerosal, 50% glycerol, pH 7.3.

## Validation Data

---



Western blot analysis of Mouse lung, using SCN5A antibody (A16665) at 1:1000 dilution.  
Secondary antibody: HRP Goat Anti-Rabbit IgG (H+L) (A5014) at 1:10000 dilution.  
Lysates/proteins: 25µg per lane.  
Blocking buffer: 3% nonfat dry milk in TBST.  
Detection: ECL Basic Kit (RM00020).  
Exposure time: 40s.