

A16663

Leader in Biomolecular Solutions for Life Science



## USP21 Rabbit pAb

Catalog No.: A16663

### Basic Information

#### Observed MW

63kDa

#### Calculated MW

63kDa

#### Category

Mouse Monoclonal Antibody

#### Applications

WB, IF/ICC, ELISA

#### Cross-Reactivity

Human, Mouse, Rat

### Background

This gene encodes a member of the C19 peptidase family, also known as family 2 of ubiquitin carboxy-terminal hydrolases. The encoded protein cleaves ubiquitin from ubiquitinated proteins for recycling in intracellular protein degradation. The encoded protein is also able to release NEDD8, a ubiquitin-like protein, from NEDD8-conjugated proteins. This gene has been referred to as USP16 and USP23 but is now known as USP21. Alternatively spliced transcript variants encoding different isoforms have been found for this gene.

### Recommended Dilutions

WB	1:500 - 1:1000
IF/ICC	1:50 - 1:200

### Immunogen Information

#### Gene ID

27005

#### Swiss Prot

Q9UK80

#### Immunogen

A synthetic peptide corresponding to a sequence within amino acids 1-100 of human USP21 (NP\_036607.3).

#### Synonyms

USP16; USP23; USP21

### Contact



[www.abclonal.com](http://www.abclonal.com)

### Product Information

#### Source

Rabbit

#### Isotype

IgG

#### Purification

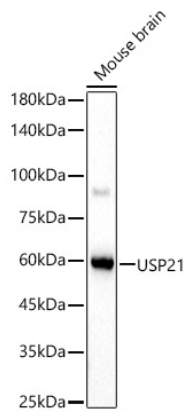
Affinity purification

#### Storage

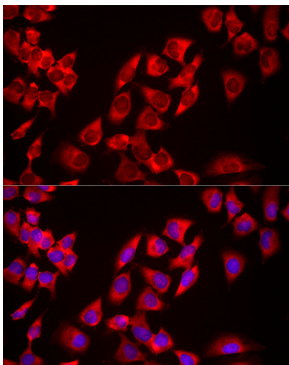
Store at -20°C. Avoid freeze / thaw cycles.

Buffer: PBS with 0.01% thimerosal, 50% glycerol, pH7.3.

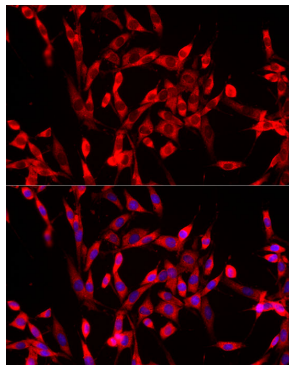
## Validation Data



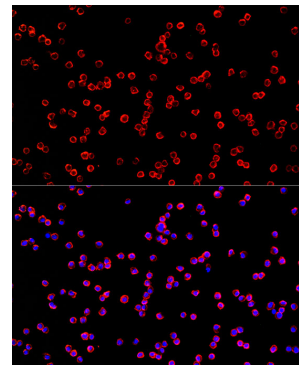
Western blot analysis of extracts of Mouse brain, using USP21 antibody (A16663) at 1:700 dilution.  
Secondary antibody: HRP Goat Anti-Rabbit IgG (H+L) (A5014) at 1:10000 dilution.  
Lysates/proteins: 25µg per lane.  
Blocking buffer: 3% nonfat dry milk in TBST.  
Detection: ECL Basic Kit (RM00020).  
Exposure time: 90s.



Immunofluorescence analysis of HeLa cells using USP21 Rabbit pAb (A16663) at dilution of 1:100 (40x lens). Blue: DAPI for nuclear staining.



Immunofluorescence analysis of PC-12 cells using USP21 Rabbit pAb (A16663) at dilution of 1:100 (40x lens). Blue: DAPI for nuclear staining.



Immunofluorescence analysis of RAW264.7 cells using USP21 Rabbit pAb (A16663) at dilution of 1:100 (40x lens). Blue: DAPI for nuclear staining.