

A16652

Leader in Biomolecular Solutions for Life Science



## Rubicon Rabbit pAb

Catalog No.: A16652

### Basic Information

**Observed MW**

108kDa

**Calculated MW**

109kDa

**Category**

Polyclonal Antibody

**Applications**

WB, ELISA

**Cross-Reactivity**

Human

### Background

The protein encoded by this gene is a negative regulator of autophagy and endocytic trafficking and controls endosome maturation. This protein contains two conserved domains, an N-terminal RUN domain and a C-terminal DUF4206 domain. The RUN domain is involved in Ras-like GTPase signaling, and the DUF4206 domain contains a diacylglycerol (DAG) binding-like motif. Mutation in this gene results in deletion of the DAG binding-like motif and causes a recessive ataxia. Alternatively spliced transcript variants encoding distinct isoforms have been found for this gene.

### Recommended Dilutions

WB 1:500 - 1:2000

### Immunogen Information

**Gene ID**

9711

**Swiss Prot**

Q92622

**Immunogen**

Recombinant fusion protein containing a sequence corresponding to amino acids 1-200 of human Rubicon (NP\_055502.1).

**Synonyms**

SCAR15; RUBICON; KIAA0226; Rubicon

### Contact



[www.abclonal.com](http://www.abclonal.com)

### Product Information

**Source**

Rabbit

**Isotype**

IgG

**Purification**

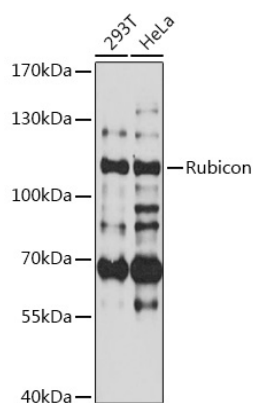
Affinity purification

**Storage**

Store at -20°C. Avoid freeze / thaw cycles.

Buffer: PBS with 0.01% thimerosal, 50% glycerol, pH 7.3.

## Validation Data



Western blot analysis of various lysates using Rubicon Rabbit pAb (A16652) at 1:3000 dilution.  
Secondary antibody: HRP Goat Anti-Rabbit IgG (H+L) (A5014) at 1:10000 dilution.  
Lysates/proteins: 25µg per lane.  
Blocking buffer: 3% nonfat dry milk in TBST.  
Detection: ECL Basic Kit (RM00020).  
Exposure time: 90s.