

A16639

Leader in Biomolecular Solutions for Life Science



ZSCAN1 Rabbit pAb

Catalog No.: A16639

Basic Information

Observed MW

45kDa/62kDa

Calculated MW

45kDa

Category

Polyclonal Antibody

Applications

WB, ELISA

Cross-Reactivity

Human

Background

Enables sequence-specific double-stranded DNA binding activity. Predicted to be involved in regulation of transcription by RNA polymerase II. Predicted to be located in nucleus. Predicted to be part of chromatin.

Recommended Dilutions

WB 1:500 - 1:2000

Immunogen Information

Gene ID

284312

Swiss Prot

Q8NBB4

Immunogen

A synthetic peptide corresponding to a sequence within amino acids 300-400 of human ZSCAN1 (NP_872378.3).

Synonyms

MZF-1; ZNF915; ZSCAN1

Contact



www.abclonal.com

Product Information

Source

Rabbit

Isotype

IgG

Purification

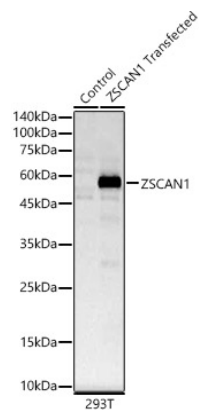
Affinity purification

Storage

Store at -20°C. Avoid freeze / thaw cycles.

Buffer: PBS with 0.01% thimerosal, 50% glycerol, pH7.3.

Validation Data



Western blot analysis of lysates from wild type (WT) and 293T cells transfected with ZSCAN1 using ZSCAN1 Rabbit pAb (A16639) at 1:2000 dilution.
Secondary antibody: HRP Goat Anti-Rabbit IgG (H+L) (AS014) at 1:10000 dilution.
Lysates/proteins: 25µg per lane.
Blocking buffer: 3% nonfat dry milk in TBST.
Detection: ECL Basic Kit (RM00020).
Exposure time: 5s.

Western blot analysis of lysates from T-47D cells, using ZSCAN1 Rabbit pAb (A16639) at 1:2000 dilution.
Secondary antibody: HRP Goat Anti-Rabbit IgG (H+L) (AS014) at 1:10000 dilution.
Lysates/proteins: 25µg per lane.
Blocking buffer: 3% nonfat dry milk in TBST.
Detection: ECL Enhanced Kit (RM00021).
Exposure time: 30s.

