

A16623

Leader in Biomolecular Solutions for Life Science



Epn2 Rabbit pAb

Catalog No.: A16623

Basic Information

Observed MW

68kDa

Calculated MW

68kDa

Category

Polyclonal Antibody

Applications

WB, ELISA

Cross-Reactivity

Human, Mouse, Rat

Background

Predicted to enable clathrin binding activity and phospholipid binding activity. Acts upstream of or within Notch signaling pathway; embryonic organ development; and in utero embryonic development. Predicted to be located in intracellular membrane-bounded organelle. Predicted to be part of clathrin coat of endocytic vesicle. Predicted to be active in endosome and plasma membrane. Orthologous to human EPN2 (epsin 2).

Recommended Dilutions

WB 1:500 - 1:1000

Immunogen Information

Gene ID

13855

Swiss Prot

O95208

Immunogen

A synthetic peptide corresponding to a sequence within amino acids 100-200 of mouse Epn2 (XP_006532226.1).

Synonyms

Ibp2; 9530051D10Rik; Epn2

Contact



www.abclonal.com

Product Information

Source

Rabbit

Isotype

IgG

Purification

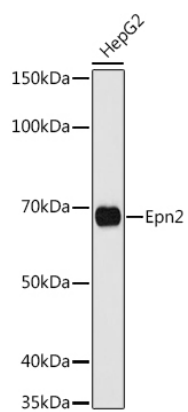
Affinity purification

Storage

Store at -20°C. Avoid freeze / thaw cycles.

Buffer: PBS with 0.01% thimerosal, 50% glycerol, pH 7.3.

Validation Data



Western blot analysis of lysates from HepG2 cells, using Epn2 Rabbit pAb (A16623) at 1:1000 dilution.
Secondary antibody: HRP Goat Anti-Rabbit IgG (H+L) (A5014) at 1:10000 dilution.
Lysates/proteins: 25µg per lane.
Blocking buffer: 3% nonfat dry milk in TBST.
Detection: ECL Basic Kit (RM00020).
Exposure time: 90s.