

A16619

Leader in Biomolecular Solutions for Life Science



# NPSR1 Rabbit pAb

Catalog No.: A16619

## Basic Information

### Observed MW

43kDa

### Calculated MW

43kDa

### Category

Mouse Monoclonal Antibody

### Applications

WB, ELISA

### Cross-Reactivity

Mouse

## Background

This gene encodes a member of the vasopressin/oxytocin subfamily of G protein-coupled receptors. The encoded membrane protein acts as a receptor for neuropeptide S and affects a variety of cellular processes through its signaling. Increased expression of this gene in ciliated cells of the respiratory epithelium and in bronchial smooth muscle cells is associated with asthma. Polymorphisms in this gene have also been associated with asthma susceptibility, panic disorders, inflammatory bowel disease, and rheumatoid arthritis. Alternative splicing results in multiple transcript variants.

## Recommended Dilutions

WB 1:500 - 1:2000

## Immunogen Information

### Gene ID

387129

### Swiss Prot

Q6W5P4

### Immunogen

A synthetic peptide corresponding to a sequence within amino acids 200 to the C-terminus of human NPSR1 (NP\_001287863.1).

### Synonyms

GPRA; NPSR; VRR1; ASRT2; PGR14; GPR154; NPSR1

## Contact



[www.abclonal.com](http://www.abclonal.com)

## Product Information

### Source

Rabbit

### Isotype

IgG

### Purification

Affinity purification

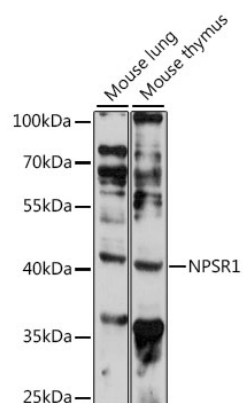
### Storage

Store at -20°C. Avoid freeze / thaw cycles.

Buffer: PBS with 0.01% thimerosal, 50% glycerol, pH 7.3.

## Validation Data

---



Western blot analysis of various lysates using NPSR1 Rabbit pAb (A16619) at 1:1000 dilution.  
Secondary antibody: HRP Goat Anti-Rabbit IgG (H+L) (AS014) at 1:10000 dilution.  
Lysates/proteins: 25µg per lane.  
Blocking buffer: 3% nonfat dry milk in TBST.  
Detection: ECL Enhanced Kit (RM00021).  
Exposure time: 10s.