

A16598

Leader in Biomolecular Solutions for Life Science



## MPP7 Rabbit pAb

Catalog No.: A16598

### Basic Information

#### Observed MW

55kDa

#### Calculated MW

66kDa

#### Category

Mouse Monoclonal Antibody

#### Applications

WB, ELISA

#### Cross-Reactivity

Mouse

### Background

The protein encoded by this gene is a member of the p55 Stardust family of membrane-associated guanylate kinase (MAGUK) proteins, which function in the establishment of epithelial cell polarity. This family member forms a complex with the polarity protein DLG1 (discs, large homolog 1) and facilitates epithelial cell polarity and tight junction formation. Polymorphisms in this gene are associated with variations in site-specific bone mineral density (BMD). Alternative splicing results in multiple transcript variants.

### Recommended Dilutions

WB 1:500 - 1:2000

### Immunogen Information

#### Gene ID

143098

#### Swiss Prot

Q5T2T1

#### Immunogen

Recombinant fusion protein containing a sequence corresponding to amino acids 297-576 of human MPP7 (NP\_775767.2).

#### Synonyms

MPP7

### Contact



[www.abclonal.com](http://www.abclonal.com)

### Product Information

#### Source

Rabbit

#### Isotype

IgG

#### Purification

Affinity purification

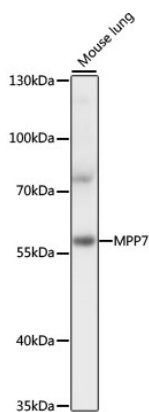
#### Storage

Store at -20°C. Avoid freeze / thaw cycles.

Buffer: PBS with 0.01% thimerosal, 50% glycerol, pH 7.3.

## Validation Data

---



Western blot analysis of lysates from mouse lung, using MPP7 Rabbit pAb (A16598) at 1:1000 dilution.  
Secondary antibody: HRP Goat Anti-Rabbit IgG (H+L) (AS014) at 1:10000 dilution.  
Lysates/proteins: 25µg per lane.  
Blocking buffer: 3% nonfat dry milk in TBST.  
Detection: ECL Basic Kit (RM00020).  
Exposure time: 1s.