

A16565

Leader in Biomolecular Solutions for Life Science



## SLAMF7 Rabbit pAb

Catalog No.: A16565

### Basic Information

**Observed MW**

35-70kDa

**Calculated MW**

37kDa

**Category**

Polyclonal Antibody

**Applications**

WB, ELISA

**Cross-Reactivity**

Human, Mouse

### Background

Enables identical protein binding activity. Predicted to be involved in adaptive immune response. Predicted to act upstream of or within regulation of natural killer cell activation. Located in endoplasmic reticulum.

### Recommended Dilutions

WB 1:1000 - 1:5000

### Immunogen Information

**Gene ID**

57823

**Swiss Prot**

Q9NQ25

**Immunogen**

Recombinant fusion protein containing a sequence corresponding to amino acids 23-226 of human SLAMF7 (NP\_067004.3).

**Synonyms**

19A; CS1; CD319; CRACC; SLAMF7

### Contact



[www.abclonal.com](http://www.abclonal.com)

### Product Information

**Source**

Rabbit

**Isotype**

IgG

**Purification**

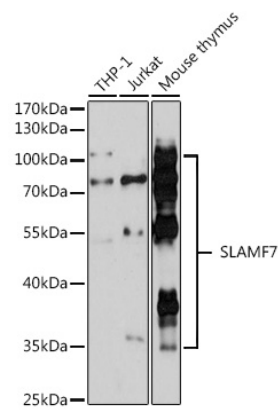
Affinity purification

**Storage**

Store at -20°C. Avoid freeze / thaw cycles.

Buffer: PBS with 0.01% thimerosal, 50% glycerol, pH 7.3.

Validation Data



Western blot analysis of various lysates using SLAMF7 Rabbit pAb (A16565) at 1:3000 dilution.  
Secondary antibody: HRP Goat Anti-Rabbit IgG (H+L) (A5014) at 1:10000 dilution.  
Lysates/proteins: 25µg per lane.  
Blocking buffer: 3% nonfat dry milk in TBST.  
Detection: ECL Basic Kit (RM00020).  
Exposure time: 90s.