

A16539

Leader in Biomolecular Solutions for Life Science



## ZCCHC10 Rabbit pAb

Catalog No.: A16539

### Basic Information

**Observed MW**

21kDa

**Calculated MW**

21kDa

**Category**

Polyclonal Antibody

**Applications**

WB, ELISA

**Cross-Reactivity**

Mouse

### Background

Predicted to enable nucleic acid binding activity and zinc ion binding activity.

### Recommended Dilutions

WB 1:500 - 1:2000

### Immunogen Information

**Gene ID**

54819

**Swiss Prot**

Q8TBK6

**Immunogen**

Recombinant fusion protein containing a sequence corresponding to amino acids 1-100 of human ZCCHC10 (NP\_001287745.1).

**Synonyms**

ZCCHC10

### Contact



[www.abclonal.com](http://www.abclonal.com)

### Product Information

**Source**

Rabbit

**Isotype**

IgG

**Purification**

Affinity purification

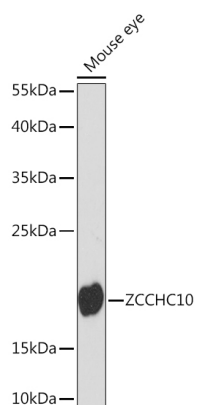
**Storage**

Store at -20°C. Avoid freeze / thaw cycles.

Buffer: PBS with 0.01% thimerosal, 50% glycerol, pH 7.3.

## Validation Data

---



Western blot analysis of lysates from Mouse eye, using ZCCHC10 Rabbit pAb (A16539) at 1:1000 dilution.  
Secondary antibody: HRP Goat Anti-Rabbit IgG (H+L) (A5014) at 1:10000 dilution.  
Lysates/proteins: 25µg per lane.  
Blocking buffer: 3% nonfat dry milk in TBST.  
Detection: ECL Basic Kit (RM00020).  
Exposure time: 90s.