

A16516

Leader in Biomolecular Solutions for Life Science



## GPR82 Rabbit pAb

Catalog No.: A16516

### Basic Information

**Observed MW**

38kDa

**Calculated MW**

38kDa

**Category**

Mouse Monoclonal Antibody

**Applications**

WB, ELISA

**Cross-Reactivity**

Mouse, Rat

### Background

The protein encoded by this gene is an orphan G protein-coupled receptor of unknown function. The encoded protein is a member of a family of proteins that contain seven transmembrane domains and transduce extracellular signals through heterotrimeric G proteins.

### Recommended Dilutions

WB 1:500 - 1:2000

### Immunogen Information

**Gene ID**

27197

**Swiss Prot**

Q96P67

**Immunogen**

A synthetic peptide corresponding to a sequence within amino acids 1-100 of human GPR82 (NP\_543007.1).

**Synonyms**

GPR82

### Contact



[www.abclonal.com](http://www.abclonal.com)

### Product Information

**Source**

Rabbit

**Isotype**

IgG

**Purification**

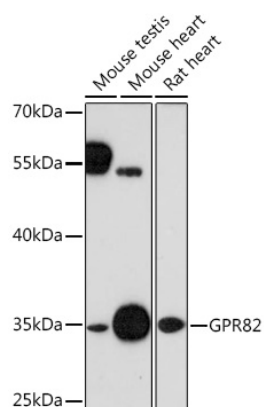
Affinity purification

**Storage**

Store at -20°C. Avoid freeze / thaw cycles.

Buffer: PBS with 0.01% thimerosal, 50% glycerol, pH 7.3.

## Validation Data



Western blot analysis of various lysates using GPR82 Rabbit pAb (A16516) at 1:1000 dilution.  
Secondary antibody: HRP Goat Anti-Rabbit IgG (H+L) (AS014) at 1:10000 dilution.  
Lysates/proteins: 25µg per lane.  
Blocking buffer: 3% nonfat dry milk in TBST.  
Detection: ECL Enhanced Kit (RM00021).  
Exposure time: 90s.