

A16507

Leader in Biomolecular Solutions for Life Science



NGEF Rabbit pAb

Catalog No.: A16507

Basic Information

Observed MW

82kDa

Calculated MW

82kDa

Category

Polyclonal Antibody

Applications

WB,IF/ICC,ELISA

Cross-Reactivity

Human,Mouse,Rat

Background

Enables guanyl-nucleotide exchange factor activity. Predicted to be involved in several processes, including activation of GTPase activity; ephrin receptor signaling pathway; and negative regulation of dendritic spine morphogenesis. Predicted to be located in cytosol. Predicted to be active in glutamatergic synapse.

Recommended Dilutions

WB 1:500 - 1:2000

IF/ICC 1:50 - 1:100

Immunogen Information

Gene ID

25791

Swiss Prot

Q8N5V2

Immunogen

Recombinant fusion protein containing a sequence corresponding to amino acids 429-710 of human NGEF (NP_062824.2).

Synonyms

EPHEXIN; ARHGEF27; NGEF

Contact



www.abclonal.com

Product Information

Source

Rabbit

Isotype

IgG

Purification

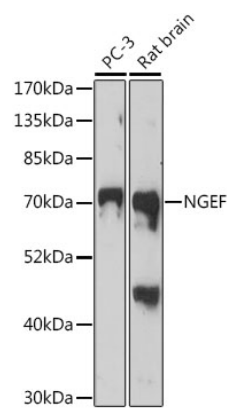
Affinity purification

Storage

Store at -20°C. Avoid freeze / thaw cycles.

Buffer: PBS with 0.01% thimerosal,50% glycerol,pH7.3.

Validation Data



Western blot analysis of various lysates using NGEF Rabbit pAb (A16507) at 1:1000 dilution.
Secondary antibody: HRP Goat Anti-Rabbit IgG (H+L) (AS014) at 1:10000 dilution.
Lysates/proteins: 25µg per lane.
Blocking buffer: 3% nonfat dry milk in TBST.
Detection: ECL Basic Kit (RM00020).
Exposure time: 3min.