

A16505

Leader in Biomolecular Solutions for Life Science



RAB38 Rabbit pAb

Catalog No.: A16505

Basic Information

Observed MW

25kDa

Calculated MW

24kDa

Category

Polyclonal Antibody

Applications

WB, ELISA

Cross-Reactivity

Human, Mouse, Rat

Background

Enables several functions, including AP-1 adaptor complex binding activity; AP-3 adaptor complex binding activity; and BLOC-2 complex binding activity. Involved in several processes, including endosome to melanosome transport; melanosome assembly; and phagosome acidification. Located in several cellular components, including cytoplasmic vesicle; lysosome; and mitochondria-associated endoplasmic reticulum membrane.

Recommended Dilutions

WB 1:500 - 1:2000

Immunogen Information

Gene ID

23682

Swiss Prot

P57729

Immunogen

Recombinant fusion protein containing a sequence corresponding to amino acids 92-211 of human RAB38 (NP_071732.1).

Synonyms

rrGTPbp; NY-MEL-1; RAB38

Contact



www.abclonal.com

Product Information

Source

Rabbit

Isotype

IgG

Purification

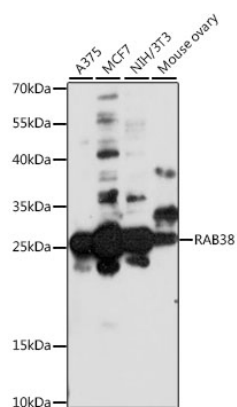
Affinity purification

Storage

Store at -20°C. Avoid freeze / thaw cycles.

Buffer: PBS with 0.01% thimerosal, 50% glycerol, pH 7.3.

Validation Data



Western blot analysis of various lysates using RAB38 Rabbit pAb (A16505) at 1:1000 dilution.
Secondary antibody: HRP Goat Anti-Rabbit IgG (H+L) (AS014) at 1:10000 dilution.
Lysates/proteins: 25µg per lane.
Blocking buffer: 3% nonfat dry milk in TBST.
Detection: ECL Basic Kit (RM00020).
Exposure time: 90s.