

A16500

Leader in Biomolecular Solutions for Life Science



## CAND2 Rabbit pAb

Catalog No.: A16500

### Basic Information

**Observed MW**

130kDa

**Calculated MW**

135kDa

**Category**

Polyclonal Antibody

**Applications**

WB,IHC-P,ELISA

**Cross-Reactivity**

Human,Mouse,Rat

### Background

Predicted to enable TBP-class protein binding activity. Predicted to be involved in SCF complex assembly; positive regulation of transcription, DNA-templated; and protein ubiquitination. Located in cytosol.

### Recommended Dilutions

WB	1:500 - 1:2000
IHC-P	1:50 - 1:200

### Immunogen Information

**Gene ID**

23066

**Swiss Prot**

O75155

**Immunogen**

Recombinant fusion protein containing a sequence corresponding to amino acids 850-1000 of human CAND2 (NP\_001155971.1).

**Synonyms**

Tp120b; TIP120B; CAND2

### Contact



[www.abclonal.com](http://www.abclonal.com)

### Product Information

**Source**

Rabbit

**Isotype**

IgG

**Purification**

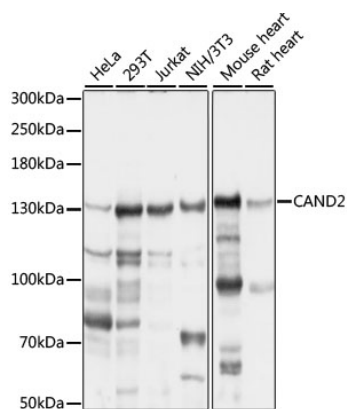
Affinity purification

**Storage**

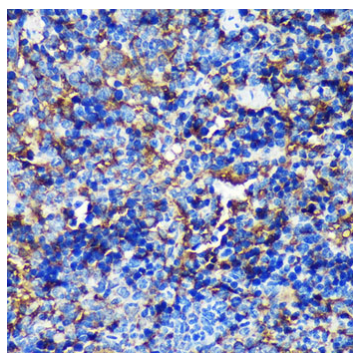
Store at -20°C. Avoid freeze / thaw cycles.

Buffer: PBS with 0.01% thimerosal,50% glycerol,pH7.3.

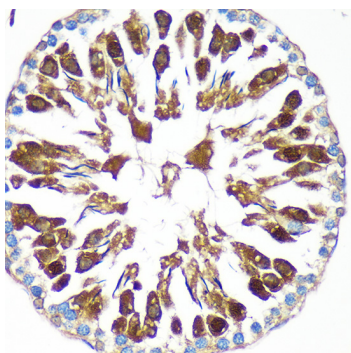
## Validation Data



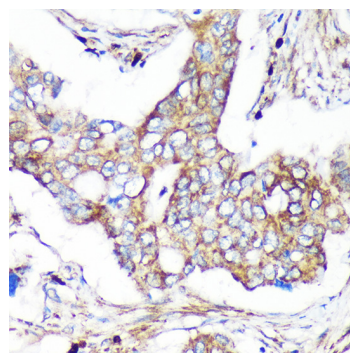
Western blot analysis of various lysates using CAND2 Rabbit pAb (A16500) at 1:1000 dilution. Secondary antibody: HRP Goat Anti-Rabbit IgG (H+L) (AS014) at 1:10000 dilution. Lysates/proteins: 25µg per lane. Blocking buffer: 3% nonfat dry milk in TBST. Detection: ECL Basic Kit (RM00020). Exposure time: 15s.



Immunohistochemistry analysis of CAND2 in paraffin-embedded Mouse spleen using CAND2 Rabbit pAb (A16500) at dilution of 1:100 (40x lens). Perform microwave antigen retrieval with 10 mM PBS buffer pH 7.2 before commencing with IHC staining protocol.



Immunohistochemistry analysis of CAND2 in paraffin-embedded Rat testis using CAND2 Rabbit pAb (A16500) at dilution of 1:100 (40x lens). Perform microwave antigen retrieval with 10 mM PBS buffer pH 7.2 before commencing with IHC staining protocol.



Immunohistochemistry analysis of CAND2 in paraffin-embedded Human colon carcinoma using CAND2 Rabbit pAb (A16500) at dilution of 1:100 (40x lens). Perform microwave antigen retrieval with 10 mM PBS buffer pH 7.2 before commencing with IHC staining protocol.