

A16463

Leader in Biomolecular Solutions for Life Science



## Cyclin B2 Rabbit pAb

Catalog No.: A16463

### Basic Information

**Observed MW**

45kDa

**Calculated MW**

45kDa

**Category**

Polyclonal Antibody

**Applications**

WB, ELISA

**Cross-Reactivity**

Human, Mouse

### Background

Cyclin B2 is a member of the cyclin family, specifically the B-type cyclins. The B-type cyclins, B1 and B2, associate with p34cdc2 and are essential components of the cell cycle regulatory machinery. B1 and B2 differ in their subcellular localization. Cyclin B1 co-localizes with microtubules, whereas cyclin B2 is primarily associated with the Golgi region. Cyclin B2 also binds to transforming growth factor beta RII and thus cyclin B2/cdc2 may play a key role in transforming growth factor beta-mediated cell cycle control.

### Recommended Dilutions

WB 1:500 - 1:1000

### Immunogen Information

**Gene ID**

9133

**Swiss Prot**

O95067

**Immunogen**

Recombinant fusion protein containing a sequence corresponding to amino acids 1-100 of human Cyclin B2 (NP\_004692.1).

**Synonyms**

HsT17299; Cyclin B2

### Contact



[www.abclonal.com](http://www.abclonal.com)

### Product Information

**Source**

Rabbit

**Isotype**

IgG

**Purification**

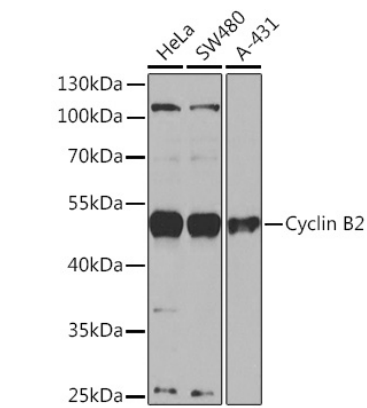
Affinity purification

**Storage**

Store at -20°C. Avoid freeze / thaw cycles.

Buffer: PBS with 0.02% sodium azide, 50% glycerol, pH 7.3.

# Validation Data



Western blot analysis of various lysates using Cyclin B2 Rabbit pAb (A16463) at 1:1000 dilution.  
Secondary antibody: HRP Goat Anti-Rabbit IgG (H+L) (AS014) at 1:10000 dilution.  
Lysates/proteins: 25µg per lane.  
Blocking buffer: 3% nonfat dry milk in TBST.  
Detection: ECL Basic Kit (RM00020).  
Exposure time: 30s.