

A16461

Leader in Biomolecular Solutions for Life Science



## INPP4B Rabbit pAb

Catalog No.: A16461

### Basic Information

#### Observed MW

98kDa

#### Calculated MW

105kDa

#### Category

Mouse Monoclonal Antibody

#### Applications

WB, ELISA

#### Cross-Reactivity

Human, Mouse, Rat

### Background

INPP4B encodes the inositol polyphosphate 4-phosphatase type II, one of the enzymes involved in phosphatidylinositol signaling pathways. This enzyme removes the phosphate group at position 4 of the inositol ring from inositol 3,4-bisphosphate. There is limited data to suggest that the human type II enzyme is subject to alternative splicing, as has been established for the type I enzyme.

### Recommended Dilutions

WB 1:500 - 1:2000

### Immunogen Information

#### Gene ID

8821

#### Swiss Prot

O15327

#### Immunogen

Recombinant fusion protein containing a sequence corresponding to amino acids 380-600 of human INPP4B (NP\_003857.2).

#### Synonyms

INPP4B

### Contact



[www.abclonal.com](http://www.abclonal.com)

### Product Information

#### Source

Rabbit

#### Isotype

IgG

#### Purification

Affinity purification

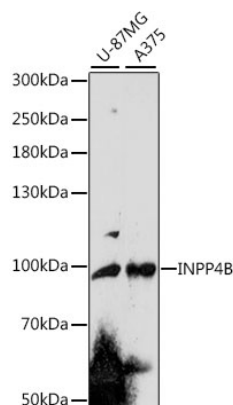
#### Storage

Store at -20°C. Avoid freeze / thaw cycles.

Buffer: PBS with 0.01% thimerosal, 50% glycerol, pH 7.3.

## Validation Data

---



Western blot analysis of various lysates using INPP4B Rabbit pAb (A16461) at 1:1000 dilution.  
Secondary antibody: HRP Goat Anti-Rabbit IgG (H+L) (AS014) at 1:10000 dilution.  
Lysates/proteins: 25µg per lane.  
Blocking buffer: 3% nonfat dry milk in TBST.  
Detection: ECL Enhanced Kit (RM00021).  
Exposure time: 150s.