

A16448

Leader in Biomolecular Solutions for Life Science



## ELL Rabbit pAb

Catalog No.: A16448

### Basic Information

**Observed MW**

72kDa

**Calculated MW**

68kDa

**Category**

Mouse Monoclonal Antibody

**Applications**

WB, ELISA

**Cross-Reactivity**

Mouse

### Background

Enables phosphatase binding activity. Involved in positive regulation of transcription, DNA-templated and snRNA transcription. Located in cytosol; nuclear body; and transcriptionally active chromatin. Part of transcription elongation factor complex.

### Recommended Dilutions

WB 1:500 - 1:2000

### Immunogen Information

**Gene ID**

8178

**Swiss Prot**

P55199

**Immunogen**

A synthetic peptide corresponding to a sequence within amino acids 350-450 of human ELL (NP\_006523.1).

**Synonyms**

MEN; ELL1; PPP1R68; C19orf17; ELL

### Contact



[www.abclonal.com](http://www.abclonal.com)

### Product Information

**Source**

Rabbit

**Isotype**

IgG

**Purification**

Affinity purification

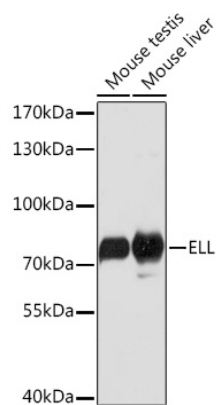
**Storage**

Store at -20°C. Avoid freeze / thaw cycles.

Buffer: PBS with 0.01% thimerosal, 50% glycerol, pH 7.3.

## Validation Data

---



Western blot analysis of various lysates using ELL Rabbit pAb (A16448) at 1:1000 dilution.  
Secondary antibody: HRP Goat Anti-Rabbit IgG (H+L) (AS014) at 1:10000 dilution.  
Lysates/proteins: 25µg per lane.  
Blocking buffer: 3% nonfat dry milk in TBST.  
Detection: ECL Basic Kit (RM00020).  
Exposure time: 3s.