

A16422

Leader in Biomolecular Solutions for Life Science



## RANBP1 Rabbit pAb

Catalog No.: A16422

### Basic Information

#### Observed MW

27kDa

#### Calculated MW

23kDa

#### Category

Mouse Monoclonal Antibody

#### Applications

WB, ELISA

#### Cross-Reactivity

Human, Mouse, Rat

### Background

This gene encodes a protein that forms a complex with Ras-related nuclear protein (Ran) and metabolizes guanoside triphosphate (GTP). This complex participates in the regulation of the cell cycle by controlling transport of proteins and nucleic acids into the nucleus. There are multiple pseudogenes for this gene on chromosomes 9, 12, 17, and X. Alternative splicing results in multiple transcript variants.

### Recommended Dilutions

WB 1:500 - 1:2000

### Immunogen Information

#### Gene ID

5902

#### Swiss Prot

P43487

#### Immunogen

A synthetic peptide corresponding to a sequence within amino acids 1-100 of human RANBP1 (NP\_002873.1).

#### Synonyms

HTF9A; RANBP1

### Contact



[www.abclonal.com](http://www.abclonal.com)

### Product Information

#### Source

Rabbit

#### Isotype

IgG

#### Purification

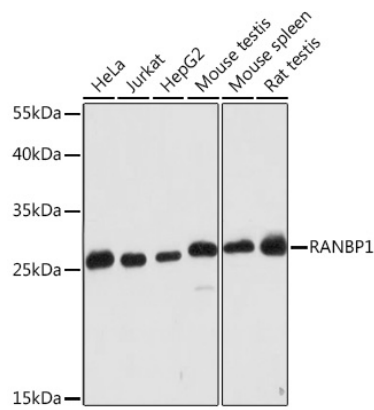
Affinity purification

#### Storage

Store at -20°C. Avoid freeze / thaw cycles.

Buffer: PBS with 0.01% thimerosal, 50% glycerol, pH 7.3.

Validation Data



Western blot analysis of various lysates using RANBP1 Rabbit pAb (A16422) at 1:2000 dilution.  
Secondary antibody: HRP Goat Anti-Rabbit IgG (H+L) (AS014) at 1:10000 dilution.  
Lysates/proteins: 25µg per lane.  
Blocking buffer: 3% nonfat dry milk in TBST.  
Detection: ECL Basic Kit (RM00020).  
Exposure time: 30s.