

A1639

Leader in Biomolecular Solutions for Life Science



## OLR1 Rabbit pAb

Catalog No.: A1639

1 Publications

### Basic Information

#### Observed MW

31kDa

#### Calculated MW

31kDa

#### Category

Polyclonal Antibody

#### Applications

WB, ELISA

#### Cross-Reactivity

Human, Mouse

### Background

This gene encodes a low density lipoprotein receptor that belongs to the C-type lectin superfamily. This gene is regulated through the cyclic AMP signaling pathway. The encoded protein binds, internalizes and degrades oxidized low-density lipoprotein. This protein may be involved in the regulation of Fas-induced apoptosis. This protein may play a role as a scavenger receptor. Mutations of this gene have been associated with atherosclerosis, risk of myocardial infarction, and may modify the risk of Alzheimer's disease. Alternate splicing results in multiple transcript variants.

### Recommended Dilutions

WB 1:100 - 1:500

### Immunogen Information

#### Gene ID

4973

#### Swiss Prot

P78380

#### Immunogen

Recombinant fusion protein containing a sequence corresponding to amino acids 58-273 of human OLR1 (NP\_002534.1).

#### Synonyms

LOX1; LOXIN; SLOX1; CLEC8A; SCARE1; OLR1

### Contact



[www.abclonal.com](http://www.abclonal.com)

### Product Information

#### Source

Rabbit

#### Isotype

IgG

#### Purification

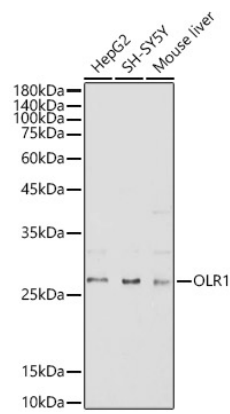
Affinity purification

#### Storage

Store at -20°C. Avoid freeze / thaw cycles.

Buffer: PBS with 0.05% proclin300, 50% glycerol, pH7.3.

Validation Data



Western blot analysis of extracts of various cell lines, using OLR1 antibody (A1639) at 1:500 dilution. Secondary antibody: HRP Goat Anti-Rabbit IgG (H+L) (AS014) at 1:10000 dilution. Lysates/proteins: 25µg per lane. Blocking buffer: 3% nonfat dry milk in TBST. Detection: ECL Basic Kit (RM00020). Exposure time: 180s.