

A16384

Leader in Biomolecular Solutions for Life Science



IFI35 Rabbit pAb

Catalog No.: A16384

1 Publications

Basic Information

Observed MW

35kDa

Calculated MW

32kDa

Category

Polyclonal Antibody

Applications

WB, ELISA

Cross-Reactivity

Human, Mouse

Background

Enables identical protein binding activity. Involved in several processes, including macrophage activation involved in immune response; positive regulation of defense response; and regulation of signal transduction. Located in several cellular components, including cytosol; extracellular space; and nucleus.

Recommended Dilutions

WB 1:500 - 1:2000

Immunogen Information

Gene ID

3430

Swiss Prot

P80217

Immunogen

Recombinant fusion protein containing a sequence corresponding to amino acids 1-288 of human IFI35 (NP_005524.2).

Synonyms

IFP35; IFI35

Contact



www.abclonal.com

Product Information

Source

Rabbit

Isotype

IgG

Purification

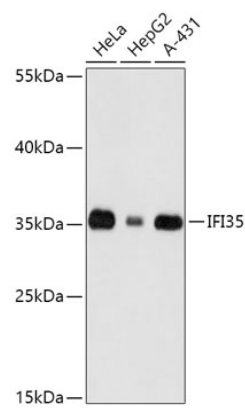
Affinity purification

Storage

Store at -20°C. Avoid freeze / thaw cycles.

Buffer: PBS with 0.01% thimerosal, 50% glycerol, pH 7.3.

Validation Data



Western blot analysis of various lysates using IFI35 Rabbit pAb (A16384) at 1:1000 dilution.
Secondary antibody: HRP Goat Anti-Rabbit IgG (H+L) (AS014) at 1:10000 dilution.
Lysates/proteins: 25µg per lane.
Blocking buffer: 3% nonfat dry milk in TBST.
Detection: ECL Basic Kit (RM00020).
Exposure time: 30s.