

FFAR1 Rabbit pAb

Catalog No.: A16379

Basic Information

Observed MW

36kDa

Calculated MW

31kDa

Category

Primary antibody

Applications

ELISA, WB

Cross-Reactivity

Human, Mouse, Rat

Background

This gene encodes a member of the GP40 family of G protein-coupled receptors that are clustered together on chromosome 19. The encoded protein is a receptor for medium and long chain free fatty acids and may be involved in the metabolic regulation of insulin secretion. Polymorphisms in this gene may be associated with type 2 diabetes.

Recommended Dilutions

WB 1:500 - 1:2000

Immunogen Information

Gene ID

2864

Swiss Prot

O14842

Immunogen

A synthetic peptide corresponding to a sequence within amino acids 200 to the C-terminus of human FFAR1 (NP_005294.1).

Synonyms

FFA1R; GPR40; GPCR40; FFAR1

Contact

 | www.abclonal.com

Product Information

Source

Rabbit

Isotype

IgG

Purification

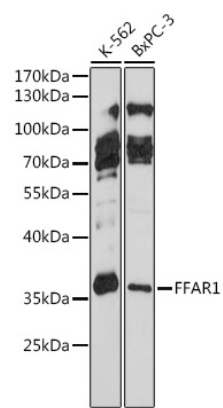
Affinity purification

Storage

Store at -20°C. Avoid freeze / thaw cycles.

Buffer: PBS with 0.01% thimerosal, 50% glycerol, pH7.3.

Validation Data



Western blot analysis of various lysates using FFAR1 Rabbit pAb (A16379) at 1:1000 dilution.
Secondary antibody: HRP Goat Anti-Rabbit IgG (H+L) (AS014) at 1:10000 dilution.
Lysates/proteins: 25µg per lane.
Blocking buffer: 3% nonfat dry milk in TBST.
Detection: ECL Basic Kit (RM00020).
Exposure time: 5s.