

A16353

Leader in Biomolecular Solutions for Life Science



BMP1 Rabbit pAb

Catalog No.: A16353

Basic Information

Observed MW

Calculated MW
111kDa

Category
Polyclonal Antibody

Applications
IF/ICC,ELISA

Cross-Reactivity
Human

Background

This gene encodes a protein that is capable of inducing formation of cartilage in vivo. Although other bone morphogenetic proteins are members of the TGF-beta superfamily, this gene encodes a protein that is not closely related to other known growth factors. This gene is expressed as alternatively spliced variants that share an N-terminal protease domain but differ in their C-terminal region.

Recommended Dilutions

IF/ICC 1:50 - 1:200

Immunogen Information

| | |
|-----------------------|-----------------------------|
| Gene ID 649 | Swiss Prot P13497 |
|-----------------------|-----------------------------|

Immunogen
Recombinant fusion protein containing a sequence corresponding to amino acids 725-986 of human BMP1 (NP_006120.1).

Synonyms
PCP; TLD; OI13; PCP2; PCOLC; BMP1

Contact

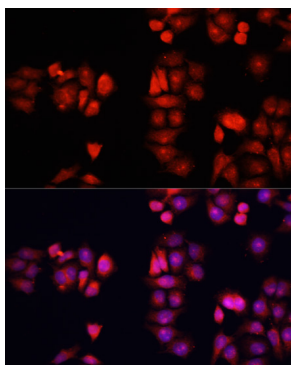
 | www.abclonal.com

Product Information

| | | |
|-------------------------|-----------------------|--|
| Source Rabbit | Isotype IgG | Purification Affinity purification |
|-------------------------|-----------------------|--|

Storage
Store at -20°C. Avoid freeze / thaw cycles.
Buffer: PBS with 0.01% thimerosal, 50% glycerol, pH 7.3.

Validation Data



Immunofluorescence analysis of HeLa cells using BMP1 Rabbit pAb (A16353) at dilution of 1:100. Secondary antibody: Cy3 Goat Anti-Rabbit IgG (H+L) (AS007) at 1:500 dilution. Blue: DAPI for nuclear staining.