

A16346

Leader in Biomolecular Solutions for Life Science



## ARAF Rabbit pAb

Catalog No.: A16346

1 Publications

### Basic Information

#### Observed MW

Refer to figures

#### Calculated MW

68kDa

#### Category

Polyclonal Antibody

#### Applications

WB,IF/ICC,ELISA

#### Cross-Reactivity

Human,Mouse,Rat

### Background

Enables protein serine/threonine kinase activity. Involved in negative regulation of apoptotic process; regulation of TOR signaling; and regulation of cellular protein metabolic process. Predicted to be active in cytosol and mitochondrion. Biomarker of high grade glioma.

### Recommended Dilutions

WB	1:500 - 1:2000
IF/ICC	1:50 - 1:200

### Immunogen Information

#### Gene ID

369

#### Swiss Prot

P10398

#### Immunogen

Recombinant fusion protein containing a sequence corresponding to amino acids 371-606 of human ARAF (NP\_001645.1).

#### Synonyms

PKS2; A-RAF; ARAF1; RAFA1; ARAF

### Contact



[www.abclonal.com](http://www.abclonal.com)

### Product Information

#### Source

Rabbit

#### Isotype

IgG

#### Purification

Affinity purification

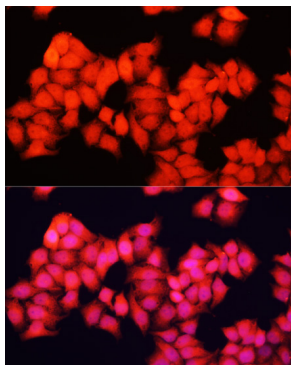
#### Storage

Store at -20°C. Avoid freeze / thaw cycles.

Buffer: PBS with 0.02% sodium azide,50% glycerol,pH7.3.

## Validation Data

---



Immunofluorescence analysis of HeLa cells using ARAF antibody (A16346) at dilution of 1:100. Blue: DAPI for nuclear staining.