

A16259

Leader in Biomolecular Solutions for Life Science



## CYP26A1 Rabbit pAb

Catalog No.: A16259

### Basic Information

**Observed MW**

55kDa

**Calculated MW**

56kDa

**Category**

Polyclonal Antibody

**Applications**

WB, ELISA

**Cross-Reactivity**

Human, Mouse

### Background

This gene encodes a member of the cytochrome P450 superfamily of enzymes. The cytochrome P450 proteins are monooxygenases which catalyze many reactions involved in drug metabolism and synthesis of cholesterol, steroids and other lipids. This endoplasmic reticulum protein acts on retinoids, including all-trans-retinoic acid (RA), with both 4-hydroxylation and 18-hydroxylation activities. This enzyme regulates the cellular level of retinoic acid which is involved in regulation of gene expression in both embryonic and adult tissues. Two alternatively spliced transcript variants of this gene, which encode the distinct isoforms, have been reported.

### Recommended Dilutions

WB 1:500 - 1:2000

### Immunogen Information

**Gene ID**

1592

**Swiss Prot**

O43174

**Immunogen**

A synthetic peptide corresponding to a sequence within amino acids 50-150 of human CYP26A1 (NP\_000774.2).

**Synonyms**

CP26; CYP26; P450RAI; P450RAI1; CYP26A1

### Contact



[www.abclonal.com](http://www.abclonal.com)

### Product Information

**Source**

Rabbit

**Isotype**

IgG

**Purification**

Affinity purification

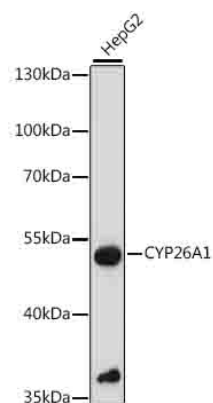
**Storage**

Store at -20°C. Avoid freeze / thaw cycles.

Buffer: PBS with 0.01% thimerosal, 50% glycerol, pH 7.3.

## Validation Data

---



Western blot analysis of lysates from HepG2 cells, using CYP26A1 Rabbit pAb (A16259) at 1:1000 dilution.  
Secondary antibody: HRP Goat Anti-Rabbit IgG (H+L) (A5014) at 1:10000 dilution.  
Lysates/proteins: 25µg per lane.  
Blocking buffer: 3% nonfat dry milk in TBST.  
Detection: ECL Basic Kit (RM00020).  
Exposure time: 3s.