

A16257

Leader in Biomolecular Solutions for Life Science



PLGF Rabbit pAb

Catalog No.: A16257

Basic Information

Observed MW

50kDa

Calculated MW

25kDa

Category

Polyclonal Antibody

Applications

WB,IF/ICC,ELISA

Cross-Reactivity

Human,Mouse,Rat

Background

Enables growth factor activity. Involved in positive regulation of cell population proliferation. Predicted to be located in extracellular region. Predicted to be active in extracellular space. Implicated in several diseases, including brain ischemia; diabetic neuropathy; glioblastoma; myocardial infarction; and pancreatic endocrine carcinoma. Biomarker of several diseases, including artery disease (multiple); autoimmune disease of musculoskeletal system (multiple); epilepsy (multiple); limited scleroderma; and pancreatic endocrine carcinoma.

Recommended Dilutions

WB	1:100 - 1:500
IF/ICC	1:50 - 1:200

Immunogen Information

Gene ID

5228

Swiss Prot

P49763

Immunogen

Recombinant fusion protein containing a sequence corresponding to amino acids 19-221 of human PLGF (NP_002623.2).

Synonyms

PGFL; PIGF; PLGF; PIGF-2; D12S1900; SHGC-10760

Contact



www.abclonal.com

Product Information

Source

Rabbit

Isotype

IgG

Purification

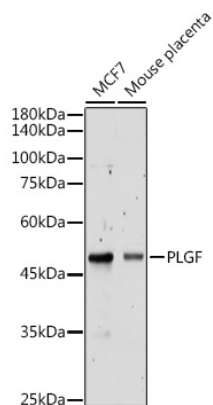
Affinity purification

Storage

Store at -20°C. Avoid freeze / thaw cycles.

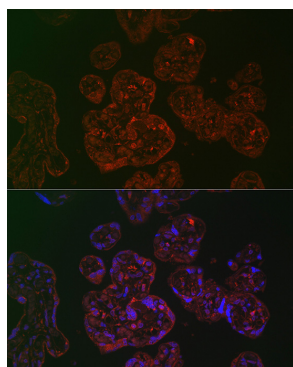
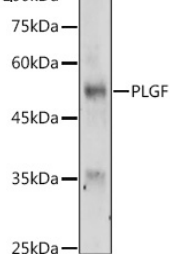
Buffer: PBS with 0.01% thimerosal, 50% glycerol, pH 7.3.

Validation Data



Western blot analysis of various lysates using PLGF Rabbit pAb (A16257) at 1:500 dilution.
 Secondary antibody: HRP Goat Anti-Rabbit IgG (H+L) (A5014) at 1:10000 dilution.
 Lysates/proteins: 25µg per lane.
 Blocking buffer: 3% nonfat dry milk in TBST.
 Detection: ECL Basic Kit (RM00020).
 Exposure time: 30s.

Western blot analysis of lysates from Rat placenta, using PLGF Rabbit pAb (A16257) at 1:500 dilution.
 Secondary antibody: HRP Goat Anti-Rabbit IgG (H+L) (A5014) at 1:10000 dilution.
 Lysates/proteins: 25µg per lane.
 Blocking buffer: 3% nonfat dry milk in TBST.
 Detection: ECL Basic Kit (RM00020).
 Exposure time: 180s.



Immunofluorescence analysis of paraffin-embedded human placenta using PLGF Rabbit pAb (A16257) at dilution of 1:100 (40x lens). Secondary antibody: Cy3 Goat Anti-Rabbit IgG (H+L) (A5007) at 1:500 dilution. Blue: DAPI for nuclear staining.