

A16252

Leader in Biomolecular Solutions for Life Science



## Lipoprotein lipase (LPL) Rabbit pAb

Catalog No.: A16252

11 Publications

### Basic Information

#### Observed MW

53kDa

#### Calculated MW

53kDa

#### Category

Polyclonal Antibody

#### Applications

WB, ELISA

#### Cross-Reactivity

Human, Mouse, Rat

### Background

LPL encodes lipoprotein lipase, which is expressed in heart, muscle, and adipose tissue. LPL functions as a homodimer, and has the dual functions of triglyceride hydrolase and ligand/bridging factor for receptor-mediated lipoprotein uptake. Severe mutations that cause LPL deficiency result in type I hyperlipoproteinemia, while less extreme mutations in LPL are linked to many disorders of lipoprotein metabolism.

### Recommended Dilutions

WB 1:500 - 1:1000

### Immunogen Information

#### Gene ID

4023

#### Swiss Prot

P06858

#### Immunogen

Recombinant fusion protein containing a sequence corresponding to amino acids 124-475 of human Lipoprotein lipase (Lipoprotein lipase (LPL)) (NP\_000228.1).

#### Synonyms

LIPD; HDLCQ11; Lipoprotein lipase (LPL)

### Contact



[www.abclonal.com](http://www.abclonal.com)

### Product Information

#### Source

Rabbit

#### Isotype

IgG

#### Purification

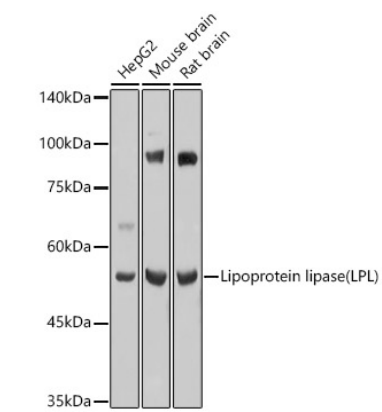
Affinity purification

#### Storage

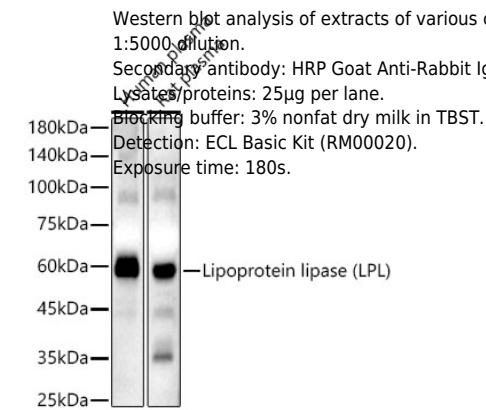
Store at -20°C. Avoid freeze / thaw cycles.

Buffer: PBS with 0.05% proclin300, 50% glycerol, pH7.3.

Validation Data



Western blot analysis of extracts of various cell lines, using Lipoprotein lipase (LPL) antibody (A16252) at 1:1000 dilution.  
Secondary antibody: HRP Goat Anti-Rabbit IgG (H+L) (AS014) at 1:10000 dilution.  
Lysates/proteins: 25µg per lane.  
Blocking buffer: 3% nonfat dry milk in TBST.  
Detection: ECL Basic Kit (RM00020).  
Exposure time: 1s.



Western blot analysis of extracts of various cell lines, using Lipoprotein lipase (LPL) antibody (A16252) at 1:5000 dilution.  
Secondary antibody: HRP Goat Anti-Rabbit IgG (H+L) (AS014) at 1:10000 dilution.  
Lysates/proteins: 25µg per lane.  
Blocking buffer: 3% nonfat dry milk in TBST.  
Detection: ECL Basic Kit (RM00020).  
Exposure time: 180s.