

A16244

Leader in Biomolecular Solutions for Life Science



FOXL2 Rabbit pAb

Catalog No.: A16244

Basic Information

Observed MW

50kDa

Calculated MW

39kDa

Category

Polyclonal Antibody

Applications

WB,IF/ICC,ELISA

Cross-Reactivity

Human,Mouse,Rat

Background

This gene encodes a forkhead transcription factor. The protein contains a fork-head DNA-binding domain and may play a role in ovarian development and function. Expansion of a polyalanine repeat region and other mutations in this gene are a cause of blepharophimosis syndrome and premature ovarian failure 3.

Recommended Dilutions

WB 1:500 - 1:1000

IF/ICC 1:50 - 1:200

Immunogen Information

Gene ID

668

Swiss Prot

P58012

Immunogen

A synthetic peptide corresponding to a sequence within amino acids 300-376 of human FOXL2 (NP_075555.1).

Synonyms

BPES; PFRK; POF3; BPES1; PINTO; FOXL2

Contact



www.abclonal.com

Product Information

Source

Rabbit

Isotype

IgG

Purification

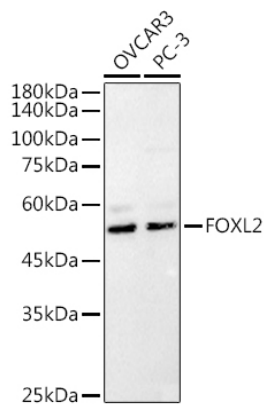
Affinity purification

Storage

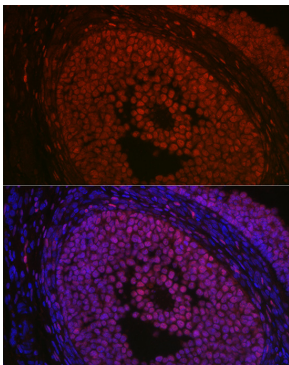
Store at -20°C. Avoid freeze / thaw cycles.

Buffer: PBS with 0.05% proclin300,50% glycerol,pH7.3.

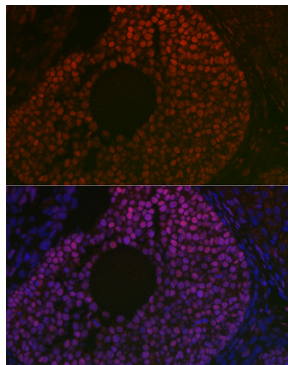
Validation Data



Western blot analysis of extracts of various cell lines, using (A16244) at 1:1000 dilution.
Secondary antibody: HRP Goat Anti-Rabbit IgG (H+L) (A5014) at 1:10000 dilution.
Lysates/proteins: 25µg per lane.
Blocking buffer: 3% nonfat dry milk in TBST.
Detection: ECL Basic Kit (RM00020).
Exposure time: 180s.



Immunofluorescence analysis of rat ovary using FOXL2 Rabbit pAb (A16244) at dilution of 1:100 (40x lens). Blue: DAPI for nuclear staining.



Immunofluorescence analysis of mouse ovary using FOXL2 Rabbit pAb (A16244) at dilution of 1:100 (40x lens). Blue: DAPI for nuclear staining.