

A16235

Leader in Biomolecular Solutions for Life Science



[KO Validated] KMT5C Rabbit pAb

Catalog No.: A16235 **KO** Validated

Basic Information

Observed MW

52kDa

Calculated MW

52kDa

Category

Polyclonal Antibody

Applications

WB, ELISA

Cross-Reactivity

Human, Mouse

Background

SUV420H2 and the related enzyme SUV420H1 (MIM 610881) function as histone methyltransferases that specifically trimethylate nucleosomal histone H4 (see MIM 602822) on lysine-20 (K20) (Schotta et al., 2004 [PubMed 15145825]).

Recommended Dilutions

WB 1:500 - 1:1000

Immunogen Information

Gene ID

84787

Swiss Prot

Q86Y97

Immunogen

A synthetic peptide corresponding to a sequence within amino acids 100-200 of human KMT5C (NP_116090.2).

Synonyms

SUV420H2; Suv4-20h2; 5C

Contact



www.abclonal.com

Product Information

Source

Rabbit

Isotype

IgG

Purification

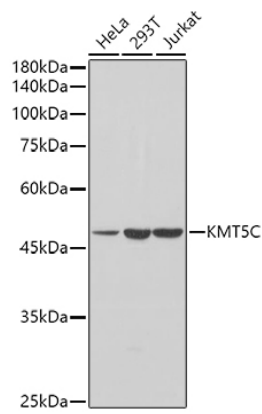
Affinity purification

Storage

Store at -20°C. Avoid freeze / thaw cycles.

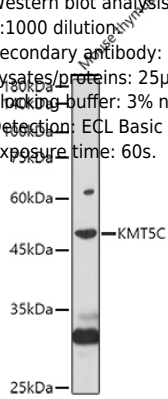
Buffer: PBS with 0.05% proclin300, 50% glycerol, pH7.3.

Validation Data



Western blot analysis of various lysates using [KO Validated] KMT5C Rabbit pAb (A16235) at 1:1000 dilution. Secondary antibody: HRP Goat Anti-Rabbit IgG (H+L) (AS014) at 1:10000 dilution. Lysates/proteins: 25µg per lane. Blocking buffer: 3% nonfat dry milk in TBST. Detection: ECL Basic Kit (RM00020). Exposure time: 1s.

Western blot analysis of lysates from Mouse thymus, using [KO Validated] KMT5C Rabbit pAb (A16235) at 1:1000 dilution. Secondary antibody: HRP Goat Anti-Rabbit IgG (H+L) (AS014) at 1:10000 dilution. Lysates/proteins: 25µg per lane. Blocking buffer: 3% nonfat dry milk in TBST. Detection: ECL Basic Kit (RM00020). Exposure time: 60s.



Western blot analysis of lysates from wild type (WT) and KMT5C knockout (KO) 293T cells, using [KO Validated] KMT5C Rabbit pAb (A16235) at 1:500 dilution. Secondary antibody: HRP Goat Anti-Rabbit IgG (H+L) (AS014) at 1:10000 dilution. Lysates/proteins: 25µg per lane. Blocking buffer: 3% nonfat dry milk in TBST. Detection: ECL Basic Kit (RM00020). Exposure time: 1s.

