

A16218

Leader in Biomolecular Solutions for Life Science



## MyoD1 Rabbit pAb

Catalog No.: A16218

3 Publications

### Basic Information

#### Observed MW

45kDa

#### Calculated MW

35kDa

#### Category

Polyclonal Antibody

#### Applications

WB,IF/ICC,ELISA

#### Cross-Reactivity

Human,Mouse,Rat

### Background

This gene encodes a nuclear protein that belongs to the basic helix-loop-helix family of transcription factors and the myogenic factors subfamily. It regulates muscle cell differentiation by inducing cell cycle arrest, a prerequisite for myogenic initiation. The protein is also involved in muscle regeneration. It activates its own transcription which may stabilize commitment to myogenesis.

### Recommended Dilutions

WB	1:500 - 1:1000
IF/ICC	1:50 - 1:200

### Immunogen Information

#### Gene ID

4654

#### Swiss Prot

P15172

#### Immunogen

A synthetic peptide corresponding to a sequence within amino acids 226-300 of human MyoD1 (NP\_002469.2).

#### Synonyms

PUM; MYF3; MYOD; CMYP17; bHLHc1; MYODRIF; MyoD1

### Contact



[www.abclonal.com](http://www.abclonal.com)

### Product Information

#### Source

Rabbit

#### Isotype

IgG

#### Purification

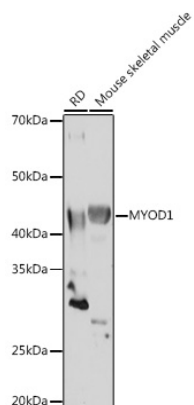
Affinity purification

#### Storage

Store at -20°C. Avoid freeze / thaw cycles.

Buffer: PBS with 0.02% sodium azide,50% glycerol,pH7.3.

## Validation Data



Western blot analysis of lysates from Rat skeletal muscle, using MyoD1 Rabbit pAb (A16218) at 1:1000 dilution.

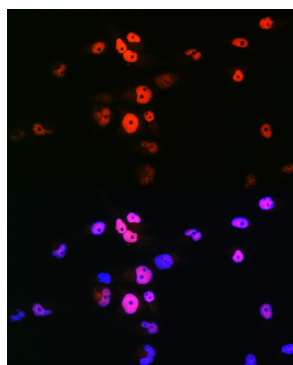
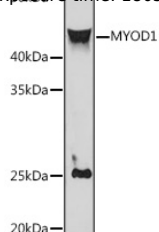
Secondary antibody: HRP Goat Anti-Rabbit IgG (H+L) (AS014) at 1:10000 dilution.

Lysates/proteins: 25µg per lane.

Blocking buffer: 3% nonfat dry milk in TBST.

Detection: ECL Basic Kit (RM00020).

Exposure time: 180s.



Immunofluorescence analysis of RD cells using MyoD1 Rabbit pAb (A16218) at dilution of 1:100 (40x lens). Secondary antibody: Cy3 Goat Anti-Rabbit IgG (H+L) (AS007) at 1:500 dilution. Blue: DAPI for nuclear staining.