

# GSPT1 Rabbit pAb

Catalog No.: A16214

## Basic Information

### Observed MW

80kDa

### Calculated MW

56kDa

### Category

Primary antibody

### Applications

ELISA, WB

### Cross-Reactivity

Human, Mouse, Rat

## Background

Enables translation release factor activity. Involved in regulation of translational termination. Acts upstream of or within protein methylation. Predicted to be located in cytosol. Predicted to be part of translation release factor complex.

## Recommended Dilutions

WB 1:500 - 1:2000

## Immunogen Information

### Gene ID

2935

### Swiss Prot

P15170

### Immunogen

Recombinant fusion protein containing a sequence corresponding to amino acids 138-420 of human GSPT1 (NP\_001123478.1).

### Synonyms

GST1; ETF3A; eRF3a; 551G9.2; GSPT1

## Contact

 | [www.abclonal.com](http://www.abclonal.com)

## Product Information

### Source

Rabbit

### Isotype

IgG

### Purification

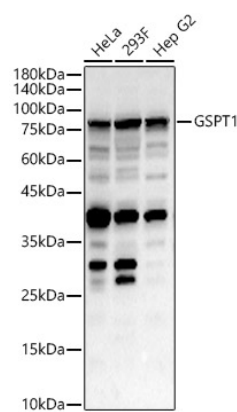
Affinity purification

### Storage

Store at -20°C. Avoid freeze / thaw cycles.

Buffer: PBS with 0.01% thimerosal, 50% glycerol, pH7.3.

# Validation Data



Western blot analysis of various lysates, using GSPT1 Rabbit pAb (A16214) at 1:2000 dilution.  
Secondary antibody: HRP Goat Anti-Rabbit IgG (H+L) (A5014) at 1:10000 dilution.  
Lysates/proteins: 25ug per lane.  
Blocking buffer: 3% nonfat dry milk in TBST.  
Detection: ECL Basic Kit (RM00020).  
Exposure time: 60s.