

A16182

Leader in Biomolecular Solutions for Life Science



SERPINA9 Rabbit pAb

Catalog No.: A16182

Basic Information

Observed MW

46kDa

Calculated MW

47kDa

Category

Polyclonal Antibody

Applications

WB, ELISA

Cross-Reactivity

Human

Background

Enables serine-type endopeptidase inhibitor activity. Predicted to be involved in negative regulation of endopeptidase activity. Predicted to be located in cytoplasm and membrane. Predicted to be active in extracellular space.

Recommended Dilutions

WB 1:500 - 1:2000

Immunogen Information

Gene ID

327657

Swiss Prot

Q86WD7

Immunogen

Recombinant fusion protein containing a sequence corresponding to amino acids 110-210 of human SERPINA9 (NP_783866.2).

Synonyms

GCET1; SERPINA11; SERPINA11b; SERPINA9

Contact



www.abclonal.com

Product Information

Source

Rabbit

Isotype

IgG

Purification

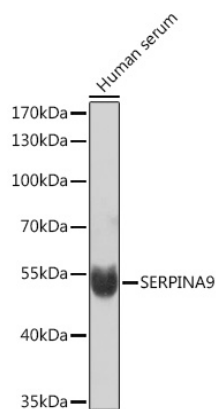
Affinity purification

Storage

Store at -20°C. Avoid freeze / thaw cycles.

Buffer: PBS with 0.01% thimerosal, 50% glycerol, pH 7.3.

Validation Data



Western blot analysis of lysates from Human serum, using SERPINA9 Rabbit pAb (A16182) at 1:1000 dilution.

Secondary antibody: HRP Goat Anti-Rabbit IgG (H+L) (AS014) at 1:10000 dilution.

Lysates/proteins: 25µg per lane.

Blocking buffer: 3% nonfat dry milk in TBST.

Detection: ECL Basic Kit (RM00020).

Exposure time: 10s.