

A16178

Leader in Biomolecular Solutions for Life Science



## ANKK1 Rabbit pAb

Catalog No.: A16178

1 Publications

### Basic Information

#### Observed MW

85kDa

#### Calculated MW

85kDa

#### Category

Mouse Monoclonal Antibody

#### Applications

WB, ELISA

#### Cross-Reactivity

Human

### Background

The protein encoded by this gene belongs to the Ser/Thr protein kinase family, and protein kinase superfamily involved in signal transduction pathways. This gene is closely linked to DRD2 gene (GeneID:1813) on chr 11, and a well studied restriction fragment length polymorphism (RFLP) designated TaqIA, was originally associated with the DRD2 gene, however, later was determined to be located in exon 8 of ANKK1 gene (PMIDs: 18621654, 15146457), where it causes a nonconservative amino acid substitution. It is not clear if this gene plays any role in neuropsychiatric disorders previously associated with Taq1A RFLP.

### Recommended Dilutions

WB 1:500 - 1:2000

### Immunogen Information

#### Gene ID

255239

#### Swiss Prot

Q8NFD2

#### Immunogen

Recombinant fusion protein containing a sequence corresponding to amino acids 1-300 of human ANKK1 (NP\_848605.1).

#### Synonyms

PKK2; sgK288; ANKK1

### Contact



[www.abclonal.com](http://www.abclonal.com)

### Product Information

#### Source

Rabbit

#### Isotype

IgG

#### Purification

Affinity purification

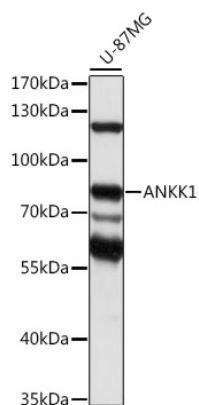
#### Storage

Store at -20°C. Avoid freeze / thaw cycles.

Buffer: PBS with 0.01% thimerosal, 50% glycerol, pH 7.3.

## Validation Data

---



Western blot analysis of lysates from U-87MG cells, using ANKK1 Rabbit pAb (A16178) at 1:1000 dilution.  
Secondary antibody: HRP Goat Anti-Rabbit IgG (H+L) (A5014) at 1:10000 dilution.  
Lysates/proteins: 25µg per lane.  
Blocking buffer: 3% nonfat dry milk in TBST.  
Detection: ECL Basic Kit (RM00020).  
Exposure time: 30s.