

A16172

Leader in Biomolecular Solutions for Life Science



MEI1 Rabbit pAb

Catalog No.: A16172

Basic Information

Observed MW

71kDa

Calculated MW

141kDa

Category

Polyclonal Antibody

Applications

WB, ELISA

Cross-Reactivity

Human, Mouse, Rat

Background

Predicted to be involved in meiosis I. Predicted to act upstream of or within gamete generation; meiotic spindle organization; and meiotic telomere clustering. Implicated in gestational trophoblastic neoplasm.

Recommended Dilutions

WB 1:500 - 1:2000

Immunogen Information

Gene ID

150365

Swiss Prot

Q5TIA1

Immunogen

Recombinant fusion protein containing a sequence corresponding to amino acids 1000-1170 of human MEI1 (NP_689726.3).

Synonyms

HYDM3; SPATA38; MEI1

Contact



www.abclonal.com

Product Information

Source

Rabbit

Isotype

IgG

Purification

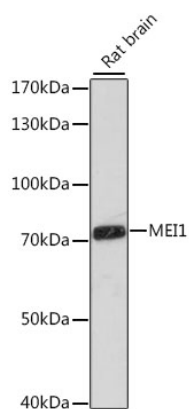
Affinity purification

Storage

Store at -20°C. Avoid freeze / thaw cycles.

Buffer: PBS with 0.01% thimerosal, 50% glycerol, pH 7.3.

Validation Data



Western blot analysis of lysates from rat brain, using MEI1 Rabbit pAb (A16172) at 1:1000 dilution.
Secondary antibody: HRP Goat Anti-Rabbit IgG (H+L) (A5014) at 1:10000 dilution.
Lysates/proteins: 25µg per lane.
Blocking buffer: 3% nonfat dry milk in TBST.
Detection: ECL Basic Kit (RM00020).
Exposure time: 30s.