

A16169

Leader in Biomolecular Solutions for Life Science



## KBTBD3 Rabbit pAb

Catalog No.: A16169

### Basic Information

**Observed MW**

71kDa

**Calculated MW**

70kDa

**Category**

Polyclonal Antibody

**Applications**

WB, ELISA

**Cross-Reactivity**

Human, Mouse, Rat

### Background

KBTBD3 (Kelch Repeat And BTB Domain Containing 3) is a Protein Coding gene. Diseases associated with KBTBD3 include Schizotypal Personality Disorder. An important paralog of this gene is KLHL24.

### Recommended Dilutions

WB 1:500 - 1:2000

### Immunogen Information

**Gene ID**

143879

**Swiss Prot**

Q8NAB2

**Immunogen**

Recombinant fusion protein containing a sequence corresponding to amino acids 520-612 of human KBTBD3 (NP\_689646.2).

**Synonyms**

BKLHD3; KBTBD3

### Contact



[www.abclonal.com](http://www.abclonal.com)

### Product Information

**Source**

Rabbit

**Isotype**

IgG

**Purification**

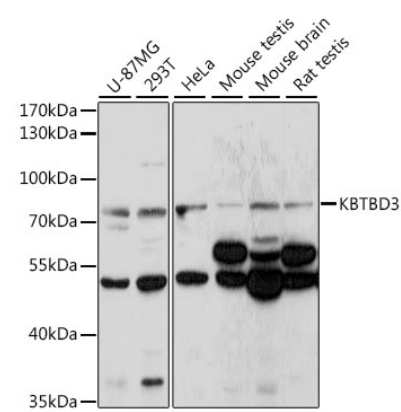
Affinity purification

**Storage**

Store at -20°C. Avoid freeze / thaw cycles.

Buffer: PBS with 0.01% thimerosal, 50% glycerol, pH 7.3.

Validation Data



Western blot analysis of various lysates using KBTBD3 Rabbit pAb (A16169) at 1:1000 dilution.  
Secondary antibody: HRP Goat Anti-Rabbit IgG (H+L) (A5014) at 1:10000 dilution.  
Lysates/proteins: 25µg per lane.  
Blocking buffer: 3% nonfat dry milk in TBST.  
Detection: ECL Basic Kit (RM00020).  
Exposure time: 30s.