

A16148

Leader in Biomolecular Solutions for Life Science



BPIFB2 Rabbit pAb

Catalog No.: A16148

Basic Information

Observed MW

49kDa

Calculated MW

49kDa

Category

Polyclonal Antibody

Applications

WB, ELISA

Cross-Reactivity

Mouse, Rat

Background

This gene encodes a member of the lipid transfer/lipopolysaccharide binding protein (LT/LBP) gene family. It is highly expressed in hypertrophic tonsils. This gene and three other members of the LT/LBP gene family form a cluster on the long arm of chromosome 20.

Recommended Dilutions

WB 1:500 - 1:2000

Immunogen Information

Gene ID

80341

Swiss Prot

Q8N4F0

Immunogen

Recombinant fusion protein containing a sequence corresponding to amino acids 40-340 of human BPIFB2 (NP_079503.1).

Synonyms

RYSR; BPIL1; LPLUNC2; C20orf184; dj726C3.2; BPIFB2

Contact



www.abclonal.com

Product Information

Source

Rabbit

Isotype

IgG

Purification

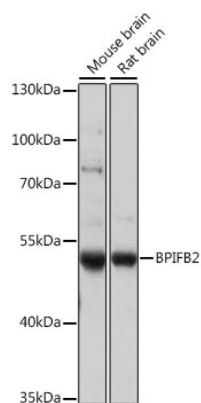
Affinity purification

Storage

Store at -20°C. Avoid freeze / thaw cycles.

Buffer: PBS with 0.01% thimerosal, 50% glycerol, pH 7.3.

Validation Data



Western blot analysis of various lysates using BPIFB2 Rabbit pAb (A16148) at 1:1000 dilution.
Secondary antibody: HRP Goat Anti-Rabbit IgG (H+L) (AS014) at 1:10000 dilution.
Lysates/proteins: 25µg per lane.
Blocking buffer: 3% nonfat dry milk in TBST.
Detection: ECL Basic Kit (RM00020).
Exposure time: 15s.