

A16127

Leader in Biomolecular Solutions for Life Science



ARL15 Rabbit pAb

Catalog No.: A16127

Basic Information

Observed MW

23kDa

Calculated MW

23kDa

Category

Mouse Monoclonal Antibody

Applications

WB, ELISA

Cross-Reactivity

Mouse

Background

Predicted to enable GTP binding activity and GTPase activity. Located in extracellular exosome.

Recommended Dilutions

WB 1:500 - 1:2000

Immunogen Information

Gene ID

54622

Swiss Prot

Q9NXU5

Immunogen

Recombinant fusion protein containing a sequence corresponding to amino acids 1-204 of human ARL15 (NP_061960.1).

Synonyms

ARFRP2; ARL15

Contact



www.abclonal.com

Product Information

Source

Rabbit

Isotype

IgG

Purification

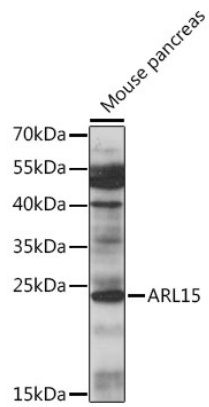
Affinity purification

Storage

Store at -20°C. Avoid freeze / thaw cycles.

Buffer: PBS with 0.01% thimerosal, 50% glycerol, pH7.3.

Validation Data



Western blot analysis of lysates from mouse pancreas, using ARL15 Rabbit pAb (A16127) at 1:1000 dilution.
Secondary antibody: HRP Goat Anti-Rabbit IgG (H+L) (AS014) at 1:10000 dilution.
Lysates/proteins: 25µg per lane.
Blocking buffer: 3% nonfat dry milk in TBST.
Detection: ECL Basic Kit (RM00020).
Exposure time: 60s.